



Fiscal Year 2023 Budget Request

vision
A healthier Southwest Idaho

mission
To promote the health and wellness of those who live, work and play in Southwest Idaho

values
Accountability, Customer-focused, Teamwork

Healthier Together

WHAT'S INSIDE:



Summary	1
Budget Request and Exhibit	3
Population and Market Value	5
County Request	6
Budget Funding Sources	7
Fund Balance	8
County Funding History	9
Board of Health	10
Employee Compensation Infographic	11
COVID Transition Graphic	12
County Infographics	13 - 24

Fiscal Year 2023 Budget Request

Fiscal Year 2022 continued to be out of the ordinary for Southwest District Health (SWDH) due to ongoing work related to COVID-19 and an unprecedented rate of growth across the district. Federal funds continue to be infused into public health across the state to assist with the COVID-19 response and to strengthen public health infrastructure to carry out the core functions and capabilities of local public health districts.

On March 1, 2022, House Bill 316 (HB316) went into effect. This bill was passed by the 2021 Idaho legislature in collaboration with Idaho counties as a result of the reduction of claims submitted to indigent fund programs due to Medicaid expansion. With these anticipated savings in mind, counties were given the option to reduce their revenue sharing funds or increase their contributions to the public health districts by taking over the state share. The counties supported the decision to increase their contributions to their local public health district. Collectively, the six counties served by SWDH will support approximately 24% of the overall budget.

Revenue Highlights

State Appropriations

During the 2021 Legislative Session, House Bill 316 (HB316) was passed and signed into law. HB316 eliminated the State General Fund appropriation to local public health and requires counties to contribute more to support the health districts. In FY2023, the State General Fund appropriation will be eliminated.

County Contributions

SWDH requested a 0% increase in county contributions in FY2022 due to the uncertainty of the impact of HB316. SWDH is requesting a 3% increase in county contributions for FY2023. Despite record-level inflation and the need to compensate staff with higher wages to retain the workforce, SWDH can balance the budget with a conservative 3% increase from counties.

Fees

For FY2023, we are budgeting a slight increase in fee revenue due to trending increases for services in several programs. The unprecedented growth across the district has created an upward trend in revenues in the Subsurface Sewage Disposal (Septic), Land Development, and Food Protection programs. Southwest District Health also anticipates a slight increase in fee revenue from clinic services such as immunizations, primary care, and chronic disease management over the previous year.

Sub grants

This year's budget reflects an overall increase of 26.8% in subgrant funding over FY2022 budget. This increase is due to additional funding budgeted to enhance capabilities in the following areas: communicable disease control, drug overdose prevention, and tobacco education and prevention funded through federal pass-through sub-grants, opioid settlement, and Millennium Fund appropriations.

Expense Highlights

Salaries

Over the past two years, SWDH has experienced extraordinary workforce turnover and staffing shortages in some critically hard to fill positions. To continue to attract and retain an excellent workforce in a rapidly changing and demanding workforce pool, the Board of Health approved salary increases for staff in FY2022, including early implementation of a 3% COLA and 2% performance-based increase, and a one-time \$2,000 retention bonus for staff who have completed six-months of employment and have an achieves or higher performance rating. With Idaho's consumer price index (CPI) up by 7.9% between February 2021 and February 2022, employees face an uphill battle of staying on pace with rising costs. In addition, the State of Idaho implemented a 3% upward shift in their pay schedule, which SWDH also uses. The 3% COLA increase will provide some relief for staff and help SWDH reduce the impact of salary compression among existing staff. Southwest District Health greatly appreciates the actions by the Board of Health to support efforts to recruit and retain quality, high-performing employees.

Employee Benefits

All employer benefit costs have remained nearly unchanged from FY2022 with a slight increase in medical insurance costs charged to the district.

Operating Expenses

Operating costs are the ongoing expenses incurred from normal day-to-day activities. Overall, budgeted operating expenses for FY2023 have increased by 31.02% over budgeted FY2022. This atypical increase is the direct result of new grant-driven requirements and is explained in more detail in Exhibit 1, page 4. Much of this increase in operating expenses is related to one-time funding expected to terminate in FY2024.

Capital Expenses

Capital expenditures for FY2023 include building, security, and IT improvements. Most of these are funded using monies committed by the Board of Health in FY2022. Due to workforce shortages and supply delays, two large projects funded for FY2022 are slated to be completed in FY2023.

Trustee and Benefit Expenses

Trustee and Benefit expenses are those costs associated with pass through funding to third parties for activities required by grant/sub-grant deliverables.

Summary

Our outstanding workforce represents our biggest asset, and our largest cost. This budget request works to keep SWDH as good stewards of public resources while continuing to provide excellent and ever-improving services to our communities. Southwest District Health appreciates the collaboration and financial support we receive from our counties and looks forward to an even closer working relationship in the years to come.



Southwest District Health FY2023 Budget Request

July 1, 2022 through June 30, 2023

District Summary	FY2021 Budget	FY2022 Budget	FY2023 Request
REVENUE			
Fees	\$1,715,979	\$1,874,852	\$1,879,344
Contracts	\$4,152,338	\$5,194,475	\$6,589,751
County Funds *	\$1,401,892	\$1,892,992	\$2,784,813
State Appropriation **	\$1,442,900	\$985,800	\$0
Millennium Fund Appropriation ***	\$129,500	\$130,000	\$71,000
Interest	\$80,000	\$50,000	\$8,000
Sale of Land, Buildings & Equip	\$20,000	\$20,000	\$20,000
Other	\$14,986	\$24,000	\$42,175
Carry-Over Funds	\$70,027	\$169,000	\$165,736
Board Committed Reserve	\$12,900	\$90,000	\$166,917
Total Revenue	\$9,040,522	\$10,431,119	\$11,727,736
EXPENDITURES			
Salary & Wage	\$4,657,914	\$5,733,833	\$6,273,563
Employee Benefits	\$2,117,263	\$2,631,858	\$2,679,678
Operating Expenses	\$2,080,545	\$1,743,528	\$2,284,495
Capital Outlay	\$184,800	\$197,400	\$410,000
Trustee Benefits (<i>Pass-thru funds</i>)	\$0	\$124,500	\$80,000
Total Expenditures	\$9,040,522	\$10,431,119	\$11,727,736
CRISIS CENTER			
Contract Revenue	\$1,520,000	\$1,083,289	\$958,081
Expenditures	\$1,520,000	\$1,083,289	\$958,081
GRAND TOTALS			
Revenues	\$10,560,522	\$11,514,408	\$12,685,817
Expenditures	\$10,560,522	\$11,514,408	\$12,685,817

* FY22 Includes HB316

** CRP through sub-grant via DHW

*** MF Supplemental (New). Remaining MF through DHW

⚙ See Exhibit 1

	<u>FY22 Budget</u>	<u>FY23 Request</u>
FTEs:	116.7	115.0
COVID	12.0	12.0
BASE	104.7	103.0

Southwest District Health

EXHIBIT 1



Below is a brief description on the changes in the below categories

Category	Description
Contract Revenues	<p>Contract revenues increased from FY22 budget to FY23 by 26.8% or \approx \$1,395,276 .</p> <p>Causes for increase:</p> <ul style="list-style-type: none"> * Millennium Funds - Instead of these funds coming in via state appropriation, due to HB316, the state will passthrough these funds to the district via contract revenues from the Idaho Department of Health & Welfare (IDHW). Increase in contract revenues \approx \$200,500. A portion of this funding is to pilot a school-based project to address the increasing trend of youth vaping. If the pilot is effective, the district will pursue ongoing funding to support a longer-term initiative to reduce vaping among Idaho youth. * COVID/Disaster Response Supplemental - the district received a supplemental grant from IDHW for COVID-related activities, future pandemic responses, and disaster preparedness capacity building. Following 9/11, the anthrax attacks, and the threat of smallpox, the federal government bolstered public health preparedness and response capacity. Over the past 20 years, funding has significantly declined, reducing local public health's ability to effectively respond to public health threats, emergencies, and disasters. This grant is intended to begin rebuilding local public health and partner capacity. The grant from IDHW for this work was conservatively estimated to impact the FY23 budget by \$1,129,000. While this grant is a one-time grant, it's anticipated timeline is currently slated to complete June 30, 2024 (FY24). * Opioid Settlement - The district has budgeted (and anticipates receiving) \$114,201 in FY23 for the Opioid Settlement. These funds are specific to addressing the ongoing opioid crisis and is funded by a settlement coming to the state of Idaho. It is anticipated these funds will be ongoing for approximately 20 years.
<u>Expenditures:</u> *Personnel	<p>Personnel has increased from FY22 budget to FY23 by 7.02% or \$587,550. This 7% increase includes the 5% increase approved by the Board of Health (BOH) on April 26, 2022. The remaining 2.02% represents additional staff built into the budget to cover increased funding for the COVID/Disaster Response funding. These positions were conservatively built into the budget and may potentially not be filled depending on need to fulfill the grant deliverables. These positions will be limited service type positions and will end when the grant phase ends.</p>
*Operating	<p>Operating has increased from FY22 budget to FY23 request by 31.02% or \$540,967. This increase relates directly to increased revenues from new funding sources such as the new Millennium Funds, Opioid grant, COVID Supplemental grant, and ARPA funds. As the largest portion of revenue increase, the COVID Supplemental funds are reimbursement funds and directly tie to increased costs in operating. In addition, several programs are requesting additional funds from reimbursed grants for covered employee development such as trainings, education, and grant required conferences.</p>
*Capital Outlay	<p>Capital Outlay has increased from FY22 budget to FY23 request by \$225,200. This includes \$166,917 of committed funds as approved by the Board of Health for activities such as security upgrades and facility improvements. The remaining increase relates to purchasing new servers and upgrades to the clinic areas.</p>

REVISED MAY 18, 2022



Southwest District Health Population & Market Value

FY2023

Changes in County Population and Net Taxable Market Value (TMV)

County	FY 2022	FY 2023	Population Percent Change	FY 2022	FY 2023	TMV Percent Change
	2020 Pop	2021 Pop		CY 2020	CY 2021	
	Population Estimates			Net Taxable Values		
Adams	4,323	4,625	6.5%	\$670,181,179	\$904,621,811	35.0%
Canyon	232,313	243,115	4.4%	\$17,104,468,660	\$21,778,491,171	27.3%
Gem	17,900	19,792	9.6%	\$1,480,679,317	\$1,938,910,270	30.9%
Owyhee	11,792	12,336	4.4%	\$809,239,280	\$986,897,722	22.0%
Payette	23,780	26,350	9.8%	\$1,928,302,133	\$2,415,126,821	25.2%
Washington	10,189	10,898	6.5%	\$957,067,413	\$1,074,284,100	12.2%
TOTAL	300,297	317,116		\$22,949,937,982	\$29,098,331,895	

17-Apr-22

Population: provided by Idaho Department of Commerce - ID39-424

Net Taxable Values: provided by State of Idaho Tax Commission



County Request - 3% Increase

Budget Request for County Fiscal Year 2023
Period Covered: October 2022 - September 2023
 Based Upon Idaho Code 39-424

County Contribution = 70% Population Distribution + 30% Taxable Market Value (TMV) (TMV)

County	2021 Population Estimate	70%: Population	Dollar Amount	30%: TMV	Dollar Amount	County Fiscal Year Contribution
ADAMS	4,625	1.46%	\$30,272	3.11%	\$27,654	\$57,926
CANYON	243,115	76.66%	\$1,591,253	74.84%	\$665,777	\$2,257,029
GEM	19,792	6.24%	\$129,544	6.66%	\$59,273	\$188,817
OWYHEE	12,336	3.89%	\$80,742	3.39%	\$30,170	\$110,912
PAYETTE	26,350	8.31%	\$172,468	8.30%	\$73,831	\$246,299
WASHINGTON	10,898	3.44%	\$71,330	3.69%	\$32,841	\$104,172
TOTAL	317,116	100.00%	\$2,075,609	100.00%	\$889,547	\$2,965,156

CHANGE FY 2022 / FY 2023 Scaled to the District Fiscal Year

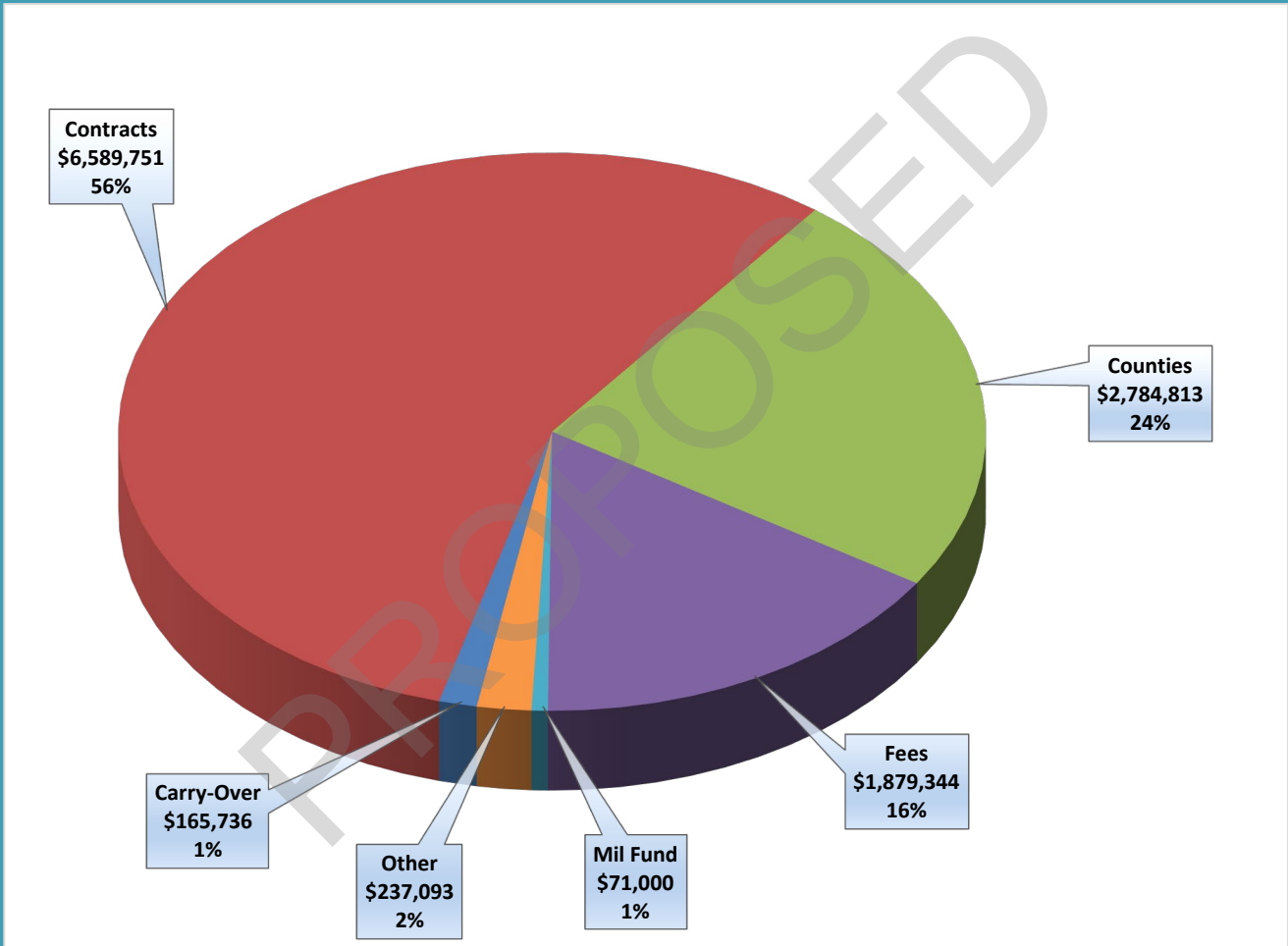
County	Approved FY2022	Requested FY2023		Total FY2023	Dollar Change	Percentage Change
		Jul - Sept	Oct - June			
ADAMS	\$35,659	\$10,566	\$43,445	\$54,011	\$18,351	51.46%
CANYON	\$1,448,358	\$429,189	\$1,692,772	\$2,121,961	\$673,603	46.51%
GEM	\$115,625	\$34,263	\$141,613	\$175,876	\$60,251	52.11%
OWYHEE	\$72,058	\$21,354	\$83,184	\$104,538	\$32,480	45.08%
PAYETTE	\$152,648	\$45,234	\$184,724	\$229,958	\$77,310	50.65%
WASHINGTON	\$68,643	\$20,340	\$78,129	\$98,469	\$29,826	43.45%
TOTAL	\$1,892,992	\$560,946	\$2,223,867	\$2,784,813	\$891,821	47.11%

Total prior year funding = \$2,878,792. This percent increase is based on that number.



Budget Funding Sources

FY 2023



**Does not include Crisis Center contract funds in the amount of \$915,848*



Southwest District Health Fund Balances - as of March 31, 2022

Restricted Funds	\$124,580
(Restricted funds include funds for Behavioral Health Board, Parents as Teachers, and Citizen Review Panel)	
Committed Funds	\$601,521
(Committed funds include funds for 27th Payperiod, Medical Equipment, Computer/EMR Replacements, Capital Projects, Website Upgrade, and Auto LGIP)	
Capital Reserve Fund (LGIP)	\$1,299,174
Unrestricted Operating Funds	<u>\$4,422,513</u>
	<u>\$6,447,788</u>

Southwest District Health
Summary of Restricted and Committed Funds - FY 2023

**As of March 31, 2022*

Restricted Funds - Third party restricted by contract, grant, or donation terms

Committed Funds - Committed by the Board of Health for a specific purpose

Fund Balances as of last month reported

	Restricted Funds	Committed Funds
Behavioral Health Board	\$ 9,819	
Parents as Teachers	\$ 66,839	
Citizen's Review Panel	\$ 19,351	
Kresge Grant	\$ -	
COVID Incentive grant	\$ -	
Crisis Center (CFAC) - rec'd FY21	\$ 28,571	
Personnel Updates		\$ -
Weiser Project		\$ 1,000
Clinic Medical Supplies/Equipment		\$ 1,614
EH Employee Training		\$ -
EH A/V Equipment		\$ 2,380
EH Vehicle		\$ 33,790
EH Security		\$ 7,500
County Collaborations		\$ 70,000
Mobile Clinic/Events Unit		\$ 130,000
Employee Development & Engagement		\$ 20,000
EKG Machine		\$ 1,000
27th Pay Period		\$ 180,814
Facility Improvements		\$ 153,423
	\$ 124,580	\$ 601,521



Southwest District Health County Funding History

District Fiscal Year July 1st through June 30th

County Contributions			
Fiscal Year	Base	Change from prior year	Dollar amount of change
2014	\$1,156,713	3.00%	\$33,690
2015	\$1,191,414	3.00%	\$34,701
2016	\$1,227,156	3.00%	\$35,742
2017	\$1,263,970	3.00%	\$36,814
2018	\$1,301,889	3.00%	\$37,919
2019	\$1,340,946	3.00%	\$39,057
2020	\$1,381,174	3.00%	\$40,228
2021	\$1,401,892	1.50%	\$20,718
** 2022	\$1,892,992	0.00%	\$491,100
2023	\$2,965,156	3.00%	\$1,563,264

- 27th PPD Year

- HB316 (total = \$2,878,792)

*** House bill 316 took effect March 1, 2022 resulting in an additional \$491,100 from the counties. No other increase approved*

FY2023 Annualized to county fiscal year contributions = 3% over total prior year funding

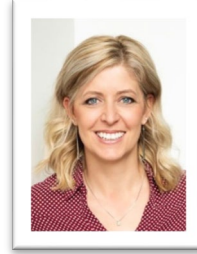
County Contributions



Board of Health



Commissioner Bryan Elliott
Chairman - Gem County



Commissioner Keri Smith
Canyon County



Commissioner Kelly Aberasturi
Vice-Chairman – Owyhee County



Commissioner Georgia Hanigan
Trustee - Payette County



Commissioner Viki Purdy
Adams County



Commissioner Lyndon Haines
Washington County



Dr. Sam Summers
Physician Representative

FY 22 Employee Compensation

TREND ALERT

Employee Turnover Rate



Southwest District Health
Turnover Rate
August 2021-December 2021

Southwest District Health
Turnover Rate
January 2022-April 2022

RECRUITING MARKET

Statistics from January 2022-April 2022



9 Vacancies
Filled

9 Separations
Processed

CONSUMER PRICE INDEX CHANGE

March 2022

5.4%

*Biggest 12 month increase since December 1981

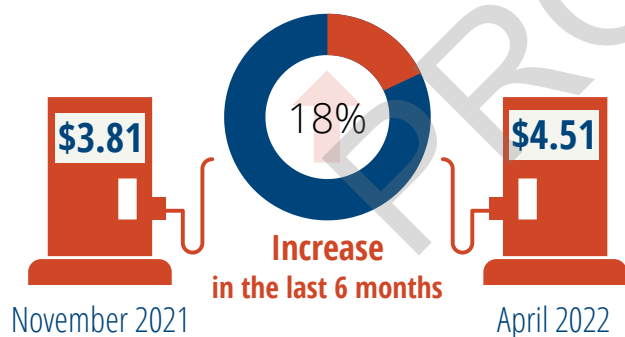
ANNUAL INFLATION RATE

February 2022

7.9%

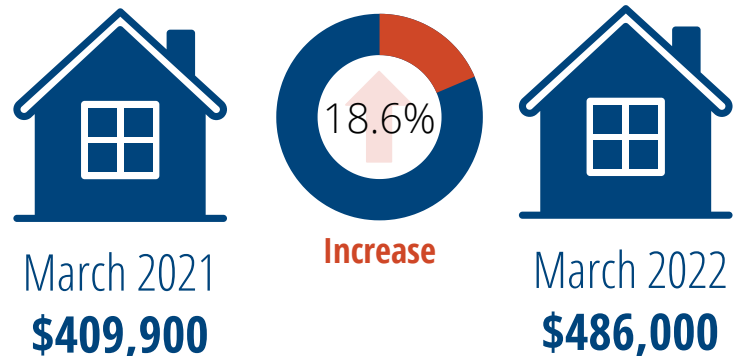
GAS PRICE IN CANYON COUNTY

AAA Data November 2021-April 2022



HOME PRICE IN CANYON COUNTY

Canyon County Data 2021-2022



FY22 CHANGE IN COUNTY EMPLOYEE COMPENSATION

3%

COLA
ADAMS COUNTY

7.5%

COLA, STEP INCREASE
FOR LONGEVITY
CANYON COUNTY

FTE
\$2.5K

INCREASE
PT PRORATED
GEM COUNTY

2%

COLA
OWYHEE COUNTY

5%

ON RESERVE FOR
WAGE STUDY
OWYHEE COUNTY

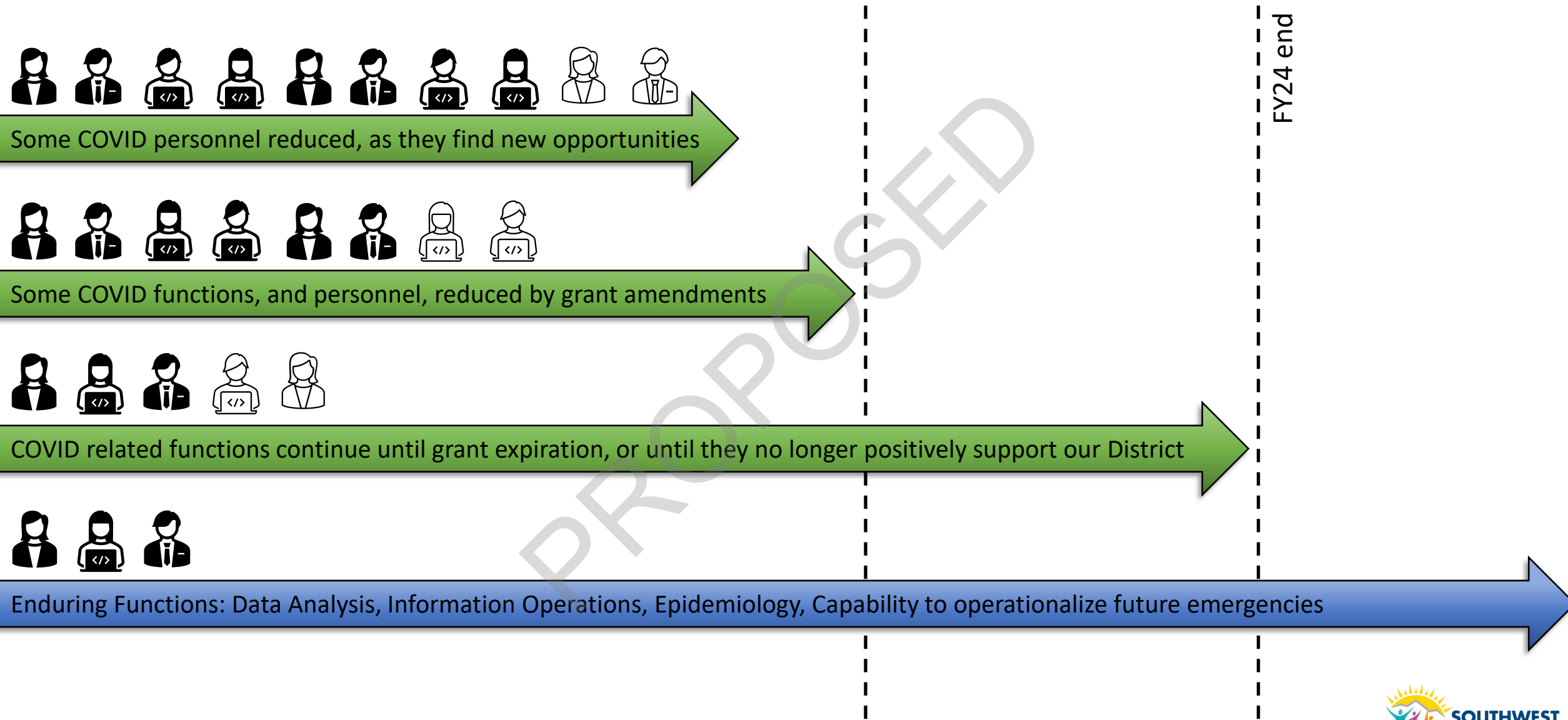
4%

COLA
PAYETTE COUNTY

3.5%

MERIT
WASHINGTON COUNTY

SWDH COVID TRANSITION



FY 21 Health Investment in Canyon County

Environmental & Community Health



813
septic inspections
and new or
replaced/repared
septic systems



120
signed land
development
plats or SER's



216
childcare
inspections



14
pool inspections



1,080
restaurant
inspections



25
temporary food
event inspections



107
Fit and Fall Proof™
participants



1,955
reportable disease
investigations



148
tobacco cessation
participants

Clinic Services



7,921
WIC participants



\$2.73 Million
spent in
WIC vouchers



721
fluoride varnishes
applied



37
dental sealants
applied



4,703
vaccines
administered

1,440

Nurse Family Partnership
(NFP) visits



283
Parents as Teachers
(PAT) visits

Health Outcomes

Health outcomes are changes in health that result from specific health care investments or interventions.



20%

of Canyon County
residents report
poor or fair health



7%

of babies born
in Canyon County
have a low birth
weight



79.1

Life expectancy
in Canyon County
is 79.1 years



4.7

poor mental health
days out of 30 days
reported by
Canyon County residents



19%

of adults
in Canyon County
smoke tobacco



35%

of adults
in Canyon County
are considered
obese



52%

of children
in Canyon County
are eligible for free
or reduced lunch



82%

of Canyon County
residents
have access to
broadband internet

Health Factors

Health Factors represent those things we can modify to improve the length and quality of life for residents.

County Health Rankings & Roadmaps. 2021. How Healthy is your County? | County Health Rankings. [online] Available at: <<https://www.countyhealthrankings.org/>> [Accessed 24 March 2022].*Represents District-wide data

Healthy Families

- Parents as Teachers home visitors helped parents learn to play meaningfully, engage with, and encourage the development of their young child. These parents are working with DHW to regain custody of a child and appreciate the Parents as Teachers program. The father said “...We are learning something new every day. We appreciate you to the fullest extent and beyond.”
- Peer Counseling staff helped a client whose baby had a tongue tie causing breastfeeding to be difficult and painful. The peer counselor spent time talking with the client about different breastfeeding positions she can try, pumping schedules for when it gets to be too much, paced bottle feeding, etc. The client no longer feels burned out, can nurse without pain, and plans to continue breastfeeding her baby.
- Nurse home visitor staff helped guide a client through the process of leaving an abusive relationship. The client received referrals to the Nampa Justice Center, is in counseling, and is receiving legal aide. She now feels safe.
- Tobacco Cessation Program participants can now pick up free diapers and wipes available at the Caldwell, Payette, Emmett, and Weiser satellite offices.
- SWDH staff often help connect children suffering from cavities and who have no insurance or dental provider with a provider willing to provide either service at little or no cost. Cavities can cause pain, discomfort, and tooth infection, disrupt learning and negatively impact mental health.
- “I can’t say enough good things about what the Diabetes Prevention Program has meant to me. I am so grateful to finally understand what was holding me back from successful weight loss. For me, the golden key was food journaling. Losing over 30 pounds...I will never look back. I feel good. I am proud of my accomplishments.” - Happy Client

Healthy Communities

- Septic applications are now accepted at satellite offices and our main office! Southwest District Health offices are located in Canyon, Gem, Payette, and Washington Counties.
- Community Health staff helped with Caldwell Health Coalition’s project, the Senior Produce Program at the Caldwell Farm to Fork Farmers Market, to reach 1,864 senior households over a 16 week period. This averages out to 116 senior households per week.
- In March 2021 staff confirmed an outbreak of Norovirus linked to a food facility in Caldwell. Environmental Health staff worked with the facility to disinfect and safely reopen while our epidemiologists worked to identify the cause, notify healthcare partners, and stop the spread in the community.
- Thanks to Public Health Emergency Preparedness and Epidemiological Response (PHEPER) team members who taught Community Emergency Preparedness Team units to citizens of Greenleaf, the city now manages its own CERT unit and is able to take care of small disasters and emergencies until first responders arrive.
- The Epidemiology team has revamped its web page on the SWDH website to be more data visualization and provide information specific to outbreaks happening in the community. Check it out at: <https://phd3.idaho.gov/healthy-living/epidemiology/>
- The SWDH Infection Prevention Epidemiologist is able to provide more one-on-one support and consultation for nursing homes, assisted living facilities, and county jails to help with infection control.

Canyon County Community Health Action Team (CHAT)



Mission

To build a healthy community through collaboration, access, and education.



Successes

Senior Produce Program at Caldwell Farmer's Market,
Walkability Improvement Project at Van Buren Elementary



Focus Areas

Access to Health Care, Improving Food Access, Addressing Mental Health,
Housing Options, Underserved Microneighborhoods, Built Environment



Contact

Contact the community health team to learn more or
get involved by emailing communityhealth@phd3.idaho.gov

FY 21 Health Investment in Gem County

Environmental & Community Health



185
septic inspections
and new or
replaced/repared
septic systems



43
signed land
development
plats or SER's



9
childcare
inspections



111
restaurant
inspections



13
temporary food
event inspections



102
reportable disease
investigations

Clinic Services



469
WIC participants



12
Parents as Teachers
(PAT) visits



659
vaccines
administered



30
fluoride varnishes
applied



Nurse Family Partnership
(NFP) visits planned to
expand to additional counties
in FY 23 *if funding allows*

Health Outcomes

Health outcomes are changes in health that result from specific health care investments or interventions.



20%
of Gem County
residents report
poor or fair health



8%
of babies born
in Gem County have
a low birth weight



Life expectancy
in Gem County is
78.2 years



4.6 poor mental health
days out of 30 days
reported by
Gem County residents



21%
of adults
in Gem County
smoke tobacco



38%
of adults
in Gem County are
considered obese



46%
of children
in Gem County are
eligible for free or
reduced lunch



78%
of Gem County
residents
have access to
broadband internet

Health Factors

Health Factors represent those things we can modify to improve the length and quality of life for residents.

Healthy Families 

- Parents as Teachers home visitors helped parents learn to play meaningfully, engage with, and encourage the development of their young child. These parents are working with DHW to regain custody of a child and appreciate the Parents as Teachers program. The father said “...We are learning something new every day. We appreciate you to the fullest extent and beyond.”
- Peer Counseling staff helped a client whose baby had a tongue tie causing breastfeeding to be difficult and painful. The peer counselor spent time talking with the client about different breastfeeding positions she can try, pumping schedules for when it gets to be too much, paced bottle feeding, etc. The client no longer feels burned out, can nurse without pain, and plans to continue breastfeeding her baby.
- Tobacco Cessation Program participants can now pick up free diapers and wipes available at the Caldwell, Payette, Emmett, and Weiser satellite offices.
- SWDH staff often help connect children suffering from cavities and who have no insurance or dental provider with a provider willing to provide either service at little or no cost. Cavities can cause pain, discomfort, and tooth infection, disrupt learning and negatively impact mental health.
- “I can’t say enough good things about what the Diabetes Prevention Program has meant to me. I am so grateful to finally understand what was holding me back from successful weight loss. For me, the golden key was food journaling. Losing over 30 pounds...I will never look back. I feel good. I am proud of my accomplishments.” - Happy Client

Healthy Communities 

- Septic applications are now accepted at satellite offices and our main office! Southwest District Health offices are located in Canyon, Gem, Payette, and Washington Counties.
- The Drug Overdose Prevention Program partnered with Emmett Police Department to promote the National Drug Take Back Day in the spring and collected over 50 lbs of unused and or unwanted prescription medications.
- Safe opioid prescribing & overdose prevention education and resources were provided to two clinics in Emmett.
- The Gem County CHAT, Gem County Health Coalition (GCHC), assisted Carberry Elementary in embedding a behavioral health specialist at the school to provide counseling, support, and resources to students.
- GCHC presented walkability assessment results to Emmett City Council and made simple safety recommendations to protect pedestrians.
- GCHC and Bi-Rite partnered through a community improvement project called Healthy Store Initiative to increase access to healthier food options. Bi-Rite has shelving in the store that promotes healthier food items and healthy beverages.
- The Epidemiology team has revamped its web page on the SWDH website to be more data visualization and provide information specific to outbreaks happening in the community. Check it out at: <https://phd3.idaho.gov/healthy-living/epidemiology/>
- The SWDH Infection Prevention Epidemiologist is able to provide more one-on-one support and consultation for nursing homes, assisted living facilities, and county jails to help with infection control.

Gem County Community Health Action Team (CHAT)



Mission

To help the Gem Community become healthier



Successes

Suicide prevention murals in all Emmett schools, Emmett High School staff participated in a mental health first aid training, Updated Gem Community Resource Guide, Bi-Rite increasing access to healthier food options



Focus Areas

Decrease food insecurity and increase access to nutritious food options, Increase mental/behavioral health support to families, Safe and walkable communities



Contact

Contact the community health team to learn more or get involved by emailing communityhealth@phd3.idaho.gov

FY 21 Health Investment in Adams County

Environmental & Community Health



65
septic inspections
and new or
replaced/repared
septic systems



2
signed land
development
plats or SER's



1
pool inspections



50
restaurant
inspections



3
temporary food
event inspections



18
reportable disease
investigations

Clinic Services



33
WIC participants



3
Parents as Teachers
(PAT) visits



7
vaccines
administered



Nurse Family Partnership
(NFP) visits planned to
expand to additional counties
in FY 23 *if funding allows*

Health Outcomes

Health outcomes are changes in health that result from specific health care investments or interventions.



of Adams County
residents report
poor or fair health



of babies born
in Adams County
have a low birth
weight



Life expectancy
in Adams County is
80.1 years



4.7 poor mental health
days out of 30 days
reported by
Adams County residents



of adults
in Adams County
smoke tobacco



of adults
in Adams County
are considered
obese



of children
in Adams County
are eligible for free
or reduced lunch



of Adams County
residents
have access to
broadband internet

Health Factors

Health Factors represent those things we can modify to improve the length and quality of life for residents.

County Health Rankings & Roadmaps. 2021. How Healthy is your County? | County Health Rankings. [online] Available at: <<https://www.countyhealthrankings.org/>> [Accessed 11 April 2022].*Represents District-wide data

Healthy Families

- Parents as Teachers home visitors helped parents learn to play meaningfully, engage with, and encourage the development of their young child. These parents are working with DHW to regain custody of a child and appreciate the Parents as Teachers program. The father said "...We are learning something new every day. We appreciate you to the fullest extent and beyond."
- Peer Counseling staff helped a client whose baby had a tongue tie causing breastfeeding to be difficult and painful. The peer counselor spent time talking with the client about different breastfeeding positions she can try, pumping schedules for when it gets to be too much, paced bottle feeding, etc. The client no longer feels burned out, can nurse without pain, and plans to continue breastfeeding her baby.
- "I can't say enough good things about what the Diabetes Prevention Program has meant to me. I am so grateful to finally understand what was holding me back from successful weight loss. For me, the golden key was food journaling. Losing over 30 pounds...I will never look back. I feel good. I am proud of my accomplishments." - Happy Client

Healthy Communities

- "This letter is being written in reference to the success we are having here at Adams County Health Center in Council due to the collaboration between our clinic and SWDH's registered dietician. Having the ability to have the dietician here in the clinic to provide education to our patients provides a greatly needed service for our rural community. With the dietician's knowledge and efforts in working with our patients, we are seeing patient A1Cs improve across the board. In addition, our patients are more engaged and feel motivated regarding their health and addressing their diabetes as well as the changes the dietician helps them make. Her services have allowed several patients to have access to Diabetic Nutrition Education without having to travel for hours. This is a major asset for our clinic and patient population since many are unable to travel due to a lack of reliable transportation, and many suffer from having financial hardships, and/or comorbidities that make travel difficult or near impossible. Our patients regularly tell me they are so happy to have this service available. Moreover, they love the dietician and her approach to addressing their needs. They appreciate that she does not have a one size fits all attitude. In conclusion, this collaboration is serving our population well, as interest is increasing, and we continue to see our patients improve their outcomes as well as engage in the process of their disease management." - Nurse, Adams County Health Center
- The Epidemiology team has revamped its web page on the SWDH website to be more data visualization and provide information specific to outbreaks happening in the community. Check it out at: <https://phd3.idaho.gov/healthy-living/epidemiology/>
- The SWDH Infection Prevention Epidemiologist is able to provide more one-on-one support and consultation for nursing homes, assisted living facilities, and county jails to help with infection control.

Adams County Community Health Action Team (CHAT)

Planned FY 22-23



Contact

Contact the community health team to learn more or get involved by emailing communityhealth@phd3.idaho.gov

FY 21 Health Investment in Owyhee County

Environmental & Community Health



106
septic inspections
and new or
replaced/repared
septic systems



2
signed land
development
plats or SER's



5
childcare
inspections



4
pool inspections



105
restaurant
inspections



7
temporary food
event inspections



19
Fit and Fall Proof™
participants



62
reportable disease
investigations



17
tobacco cessation
participants

Clinic Services



481
WIC participants



25
Parents as Teachers
(PAT) visits



145
vaccines
administered



38
fluoride varnishes
applied



Nurse Family Partnership
(NFP) visits planned to
expand to additional counties
in FY 23 *if funding allows*

Health Outcomes

Health outcomes are changes in health that result from specific health care investments or interventions.



24%

of Owyhee County
residents report
poor or fair health



8%

of babies born
in Owyhee County
have a low birth
weight



Life expectancy
in Owyhee County
is 78.2 years



4.9 poor mental health
days out of 30 days
reported by
Owyhee County residents



21%

of adults
in Owyhee County
smoke tobacco



40%

of adults
in Owyhee County
are considered
obese



58%

of children
in Owyhee County
are eligible for free
or reduced lunch



74%

of Owyhee County
residents
have access to
broadband internet

Health Factors

Health Factors represent those things we can modify to improve the length and quality of life for residents.

County Health Rankings & Roadmaps. 2021. How Healthy is your County? | County Health Rankings. [online] Available at: <<https://www.countyhealthrankings.org/>> [Accessed 11 April 2022].*Represents District-wide data

Healthy Families

- Parents as Teachers home visitors helped parents learn to play meaningfully, engage with, and encourage the development of their young child. These parents are working with DHW to regain custody of a child and appreciate the Parents as Teachers program. The father said "...We are learning something new every day. We appreciate you to the fullest extent and beyond."
- Peer Counseling staff helped a client whose baby had a tongue tie causing breastfeeding to be difficult and painful. The peer counselor spent time talking with the client about different breastfeeding positions she can try, pumping schedules for when it gets to be too much, paced bottle feeding, etc. The client no longer feels burned out, can nurse without pain, and plans to continue breastfeeding her baby.
- SWDH staff often help connect children suffering from cavities and who have no insurance or dental provider with a provider willing to provide either service at little or no cost. Cavities can cause pain, discomfort, and tooth infection, disrupt learning and negatively impact mental health.
- "I can't say enough good things about what the Diabetes Prevention Program has meant to me. I am so grateful to finally understand what was holding me back from successful weight loss. For me, the golden key was food journaling. Losing over 30 pounds...I will never look back. I feel good. I am proud of my accomplishments." - Happy Client

Healthy Communities

- Septic applications are now accepted at satellite offices and our main office! Southwest District Health offices are located in Canyon, Gem, Payette, and Washington Counties.
- Partnered with R3 Behavioral Health/IDHW to facilitate trauma-informed de-escalation training for over 50 first responders and law enforcement officers of the Shoshone-Paiute Tribe of Duck Valley Reservation.
- Distributed 100 gun locks, 150 Detera Pouches, and 25 medication lock boxes to Duck Valley Reservation. Death by suicide decreased and a trusting relationship was established between SWDH/IDHW and the Shoshone-Paiute Tribe.
- Distributed Be The Parents (BTP) printed material to the Owyhee Community Health Facility in Duck Valley.
- With support from the Partnerships for Success (PFS) grant, Lifeskills for Youth class was taught to 24 ninth-grade students at Homedale High School as an elective. A substance use education video was viewed by 38 students at Homedale High School.
- Partnered with the Idaho State Police and the Canyon Owyhee School Service Organization (COSSA) Regional Technical and Education Center to provide DITEP training to 24 of the COSSA staff.
- The Epidemiology team has revamped its web page on the SWDH website to be more data visualization and provide information specific to outbreaks happening in the community. Check it out at: <https://phd3.idaho.gov/healthy-living/epidemiology/>
- The SWDH Infection Prevention Epidemiologist is able to provide more one-on-one support and consultation for nursing homes, assisted living facilities, and county jails to help with infection control.

Owyhee County Community Health Action Team (CHAT)



Mission

To improve access to services, collaboration, and education for a healthier Owyhee County



Contact

Contact the community health team to learn more or get involved by emailing communityhealth@phd3.idaho.gov



Focus Areas

Support healthy behaviors and decision-making in teens through youth-led anti-vaping education and awareness, Improve equitable access to health resources and increase the availability of services, Increase the community's awareness of and investment in the Well Connected Communities programs

FY 21 Health Investment in Payette County

Environmental & Community Health



102
septic inspections
and new or
replaced/repared
septic systems



10
signed land
development
plats or SER's



11
childcare
inspections



6
pool inspections



118
restaurant
inspections



10
temporary food
event inspections



152
reportable disease
investigations

Clinic Services



845
WIC participants



33
Parents as Teachers
(PAT) visits



96
fluoride varnishes
applied



704
vaccines
administered



Nurse Family Partnership
(NFP) visits planned to
expand to additional counties
in FY 23 *if funding allows*



45
dental sealants
applied

Health Outcomes

Health outcomes are changes in health that result from specific health care investments or interventions.



of Payette County residents report poor or fair health



of babies born in Payette County have a low birth weight



Life expectancy in Payette County is 76.6 years



4.6 poor mental health days out of 30 days reported by Payette County residents



of adults in Payette County smoke tobacco



of adults in Payette County are considered obese



of children in Payette County are eligible for free or reduced lunch



of Payette County residents have access to broadband internet

Health Factors

Health Factors represent those things we can modify to improve the length and quality of life for residents.

County Health Rankings & Roadmaps. 2021. How Healthy is your County? | County Health Rankings. [online] Available at: <<https://www.countyhealthrankings.org/>> [Accessed 11 April 2022].*Represents District-wide data

Healthy Families

- Parents as Teachers home visitors helped parents learn to play meaningfully, engage with, and encourage the development of their young child. These parents are working with DHW to regain custody of a child and appreciate the Parents as Teachers program. The father said "...We are learning something new every day. We appreciate you to the fullest extent and beyond."
- Peer Counseling staff helped a client whose baby had a tongue tie causing breastfeeding to be difficult and painful. The peer counselor spent time talking with the client about different breastfeeding positions she can try, pumping schedules for when it gets to be too much, paced bottle feeding, etc. The client no longer feels burned out, can nurse without pain, and plans to continue breastfeeding her baby.
- An SWDH employee working in the Payette office helped connect a young client who just learned she was pregnant to Health and Welfare to apply for Medicaid. The employee also shared information about WIC services which the client had never heard of.
- Tobacco Cessation Program participants can now pick up free diapers and wipes available at the Caldwell, Payette, Emmett, and Weiser satellite offices.
- SWDH staff often help connect children suffering from cavities and who have no insurance or dental provider with a provider willing to provide either service at little or no cost. Cavities can cause pain, discomfort, and tooth infection, disrupt learning and negatively impact mental health.
- "I can't say enough good things about what the Diabetes Prevention Program has meant to me. I am so grateful to finally understand what was holding me back from successful weight loss. For me, the golden key was food journaling. Losing over 30 pounds...I will never look back. I feel good. I am proud of my accomplishments." - Happy Client

Healthy Communities

- Septic applications are now accepted at satellite offices and our main office! Southwest District Health offices are located in Canyon, Gem, Payette, and Washington Counties.
- There were three active Fit and Fall Proof class sites in Payette County.
- The Epidemiology team has revamped its web page on the SWDH website to be more data visualization and provide information specific to outbreaks happening in the community. Check it out at: <https://phd3.idaho.gov/healthy-living/epidemiology/>
- The SWDH Infection Prevention Epidemiologist is able to provide more one-on-one support and consultation for nursing homes, assisted living facilities, and county jails to help with infection control.

Payette County Community Health Action Team (CHAT)



Mission

Identify community needs and create actionable, collaborative solutions to overcome barriers and strengthen our community well-being



Focus Areas

Behavioral Health Access, Food Access, Transportation, Youth Supports (ACEs, SUDs, and related issues)



Contact

Contact the community health team to learn more or get involved by emailing communityhealth@phd3.idaho.gov

FY 21 Health Investment in Washington County

Environmental & Community Health



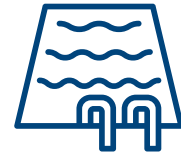
55
septic inspections
and new or
replaced/repairs
septic systems



1
signed land
development
plats or SER's



5
childcare
inspections



4
pool inspections



65
restaurant
inspections



5
temporary food
event inspections



53
reportable disease
investigations

Clinic Services



251
WIC participants



12
Parents as Teachers
(PAT) visits



16
fluoride varnishes
applied



521
vaccines
administered



Nurse Family Partnership
(NFP) visits planned to
expand to additional counties
in FY 23 *if funding allows*



16
dental sealants
applied

Health Outcomes

Health outcomes are changes in health that result from specific health care investments or interventions.



of Washington
County residents
report poor or
fair health



of babies born
in Washington
County have a low
birth weight



Life expectancy
in Washington
County is
78.7 years



4.7 poor mental health days
out of 30 days reported by
Washington County
residents



of adults
in Washington
County
smoke tobacco



of adults
in Washington
County are
considered obese



of children
in Washington County
are eligible for free or
reduced lunch



of Washington
County residents
have access to
broadband internet

Health Factors

Health Factors represent those things we can modify to improve the length and quality of life for residents.

County Health Rankings & Roadmaps. 2021. How Healthy is your County? | County Health Rankings. [online] Available at: <<https://www.countyhealthrankings.org/>> [Accessed 11 April 2022].*Represents District-wide data

Healthy Families

- Parents as Teachers home visitors helped parents learn to play meaningfully, engage with, and encourage the development of their young child. These parents are working with DHW to regain custody of a child and appreciate the Parents as Teachers program. The father said "...We are learning something new every day. We appreciate you to the fullest extent and beyond."
- Peer Counseling staff helped a client whose baby had a tongue tie causing breastfeeding to be difficult and painful. The peer counselor spent time talking with the client about different breastfeeding positions she can try, pumping schedules for when it gets to be too much, paced bottle feeding, etc. The client no longer feels burned out, can nurse without pain, and plans to continue breastfeeding her baby.
- Tobacco Cessation Program participants can now pick up free diapers and wipes available at the Caldwell, Payette, Emmett, and Weiser satellite offices.
- SWDH staff often help connect children suffering from cavities and who have no insurance or dental provider with a provider willing to provide either service at little or no cost. Cavities can cause pain, discomfort, and tooth infection, disrupt learning and negatively impact mental health.
- "I can't say enough good things about what the Diabetes Prevention Program has meant to me. I am so grateful to finally understand what was holding me back from successful weight loss. For me, the golden key was food journaling. Losing over 30 pounds...I will never look back. I feel good. I am proud of my accomplishments." - Happy Client

Healthy Communities

- Septic applications are now accepted at satellite offices and our main office! Southwest District Health offices are located in Canyon, Gem, Payette, and Washington Counties.
- Safe opioid prescribing & overdose prevention education and resources were provided to one clinic in Weiser.
- The Epidemiology team has revamped its web page on the SWDH website to be more data visualization and provide information specific to outbreaks happening in the community. Check it out at: <https://phd3.idaho.gov/healthy-living/epidemiology/>
- The SWDH Infection Prevention Epidemiologist is able to provide more one-on-one support and consultation for nursing homes, assisted living facilities, and county jails to help with infection control.

Washington County Community Health Action Team (CHAT)



Contact

Contact the community health team to learn more or get involved by emailing communityhealth@phd3.idaho.gov