

Algorithms for Prevention and Management of *Clostridium difficile* Infections in Long-term Care Facilities

- A1 Early Recognition and Testing
- A2 Contact Precautions
- A3 Room Placement
- A3.1 Identifying Lower Risk Roommates
- A4 Environmental Cleaning and Disinfection
- A5 Social and Activity Precautions

Definitions and commonly used acronyms

ADL: activities of daily living

CDI: *Clostridium difficile* infection

HH: hand hygiene

PPE: personal protective equipment

PPIs: proton pump inhibitors

Standard Precautions (SP): for the care of all residents, all of the time

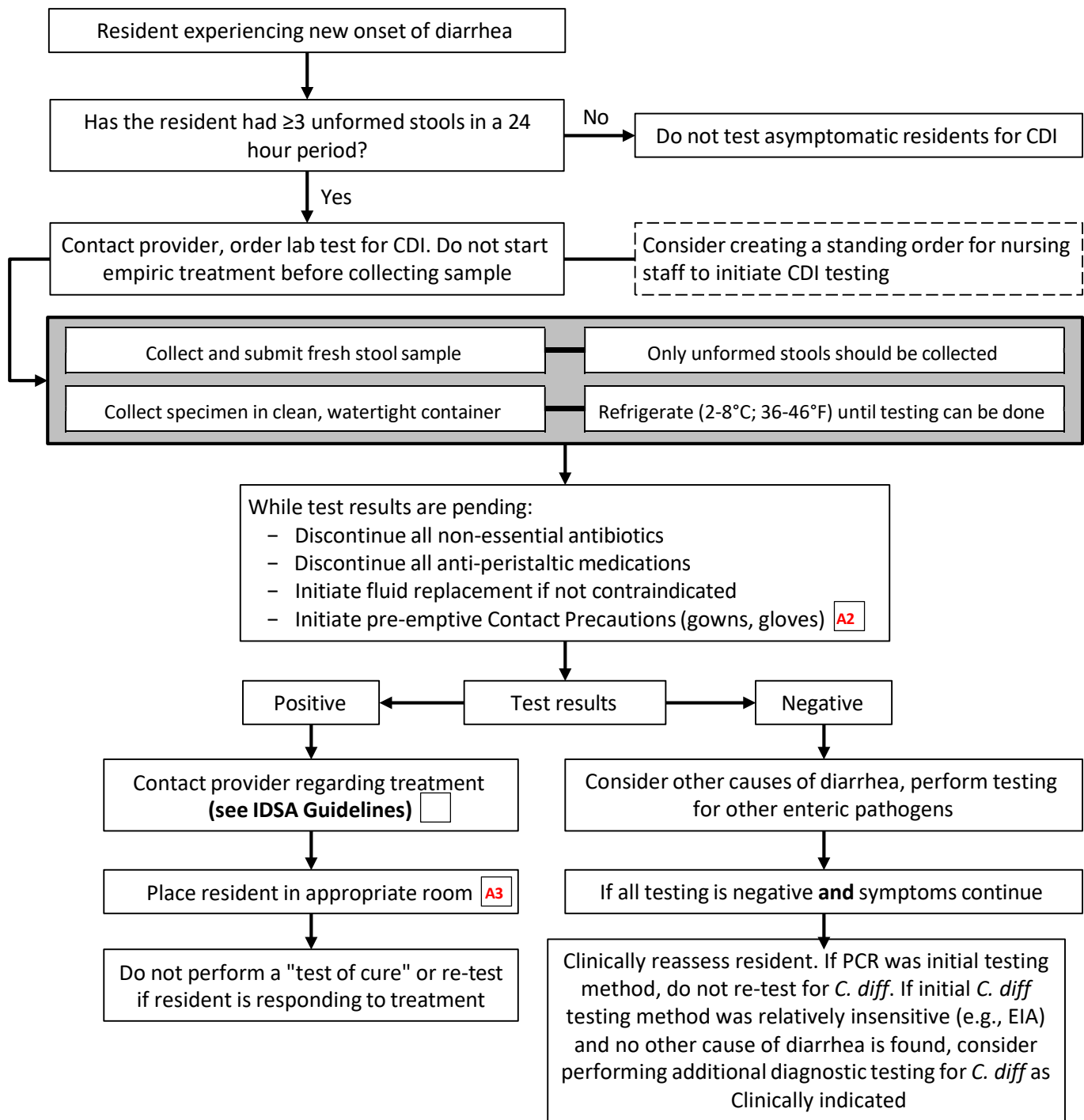
- Wear gloves, gown, mask or eye protection if you anticipate you may have any contact with body fluids (direct contact, spraying, or splashing) while performing care to the resident

Contact Precautions (CP): for the care of residents with CDI symptoms

- Always wear gloves and a gown to provide care to the resident
- Place resident in a private room, if available
- Dedicate equipment to individual residents who have CDI whenever possible (e.g., commodes, blood pressure cuffs, and stethoscopes)
- Clean and disinfect all shared equipment immediately after use and before use with any other resident



A1. Early Recognition and Testing

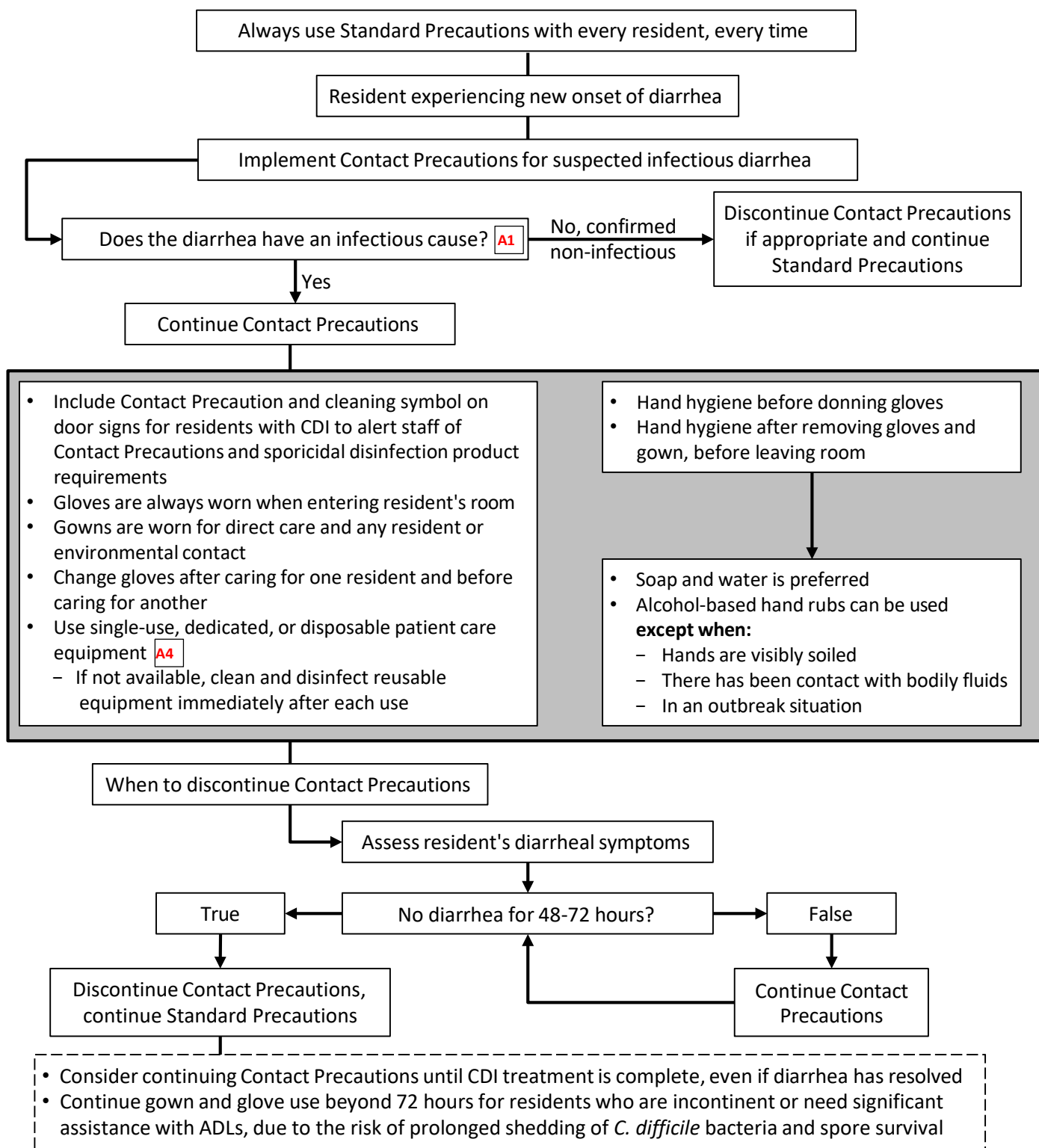


Action Items:

- Train staff to recognize CDI symptoms and to submit only unformed stools for CDI testing
- Establish policy with lab to reject formed and repeat stools for CDI testing
- Know what diagnostic testing method is used by your laboratory



A2. Contact Precautions

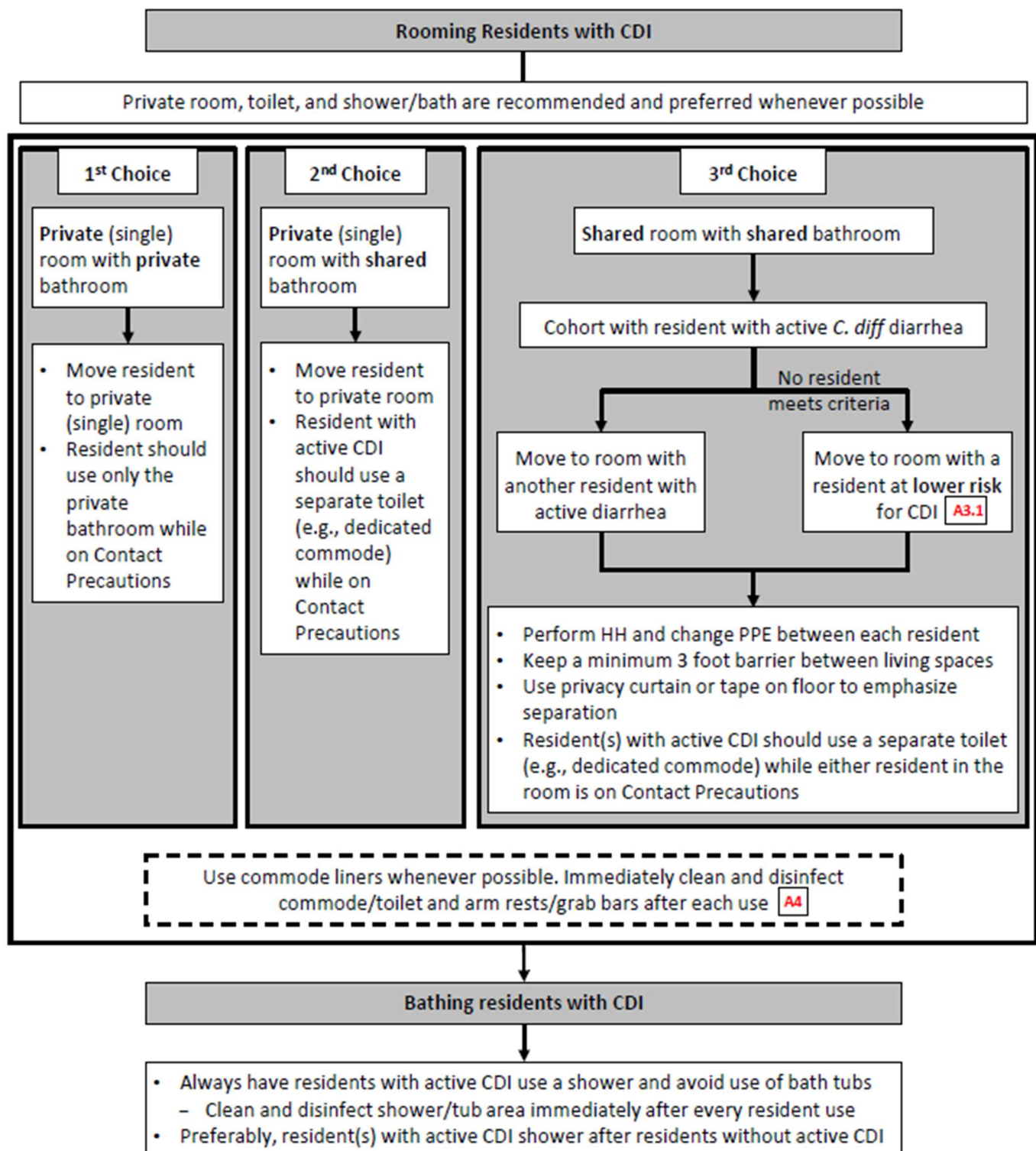


Action Items:

Provide gowns, gloves, and alcohol-based hand rubs outside resident's room

Assure laundry bin, trash can, and alcohol-based hand rubs are readily accessible inside resident's room

A3. Room Placement



A3.1 Identifying Lower Risk Roommates

Primary considerations

Not currently taking antibiotics (1st choice)

or has not taken antibiotics in previous 4 weeks (2nd choice)

or has not taken antibiotics in previous 12 weeks (3rd choice)

No history of prior CDI (1st choice)

or has no CDI in previous 4 weeks (2nd choice)

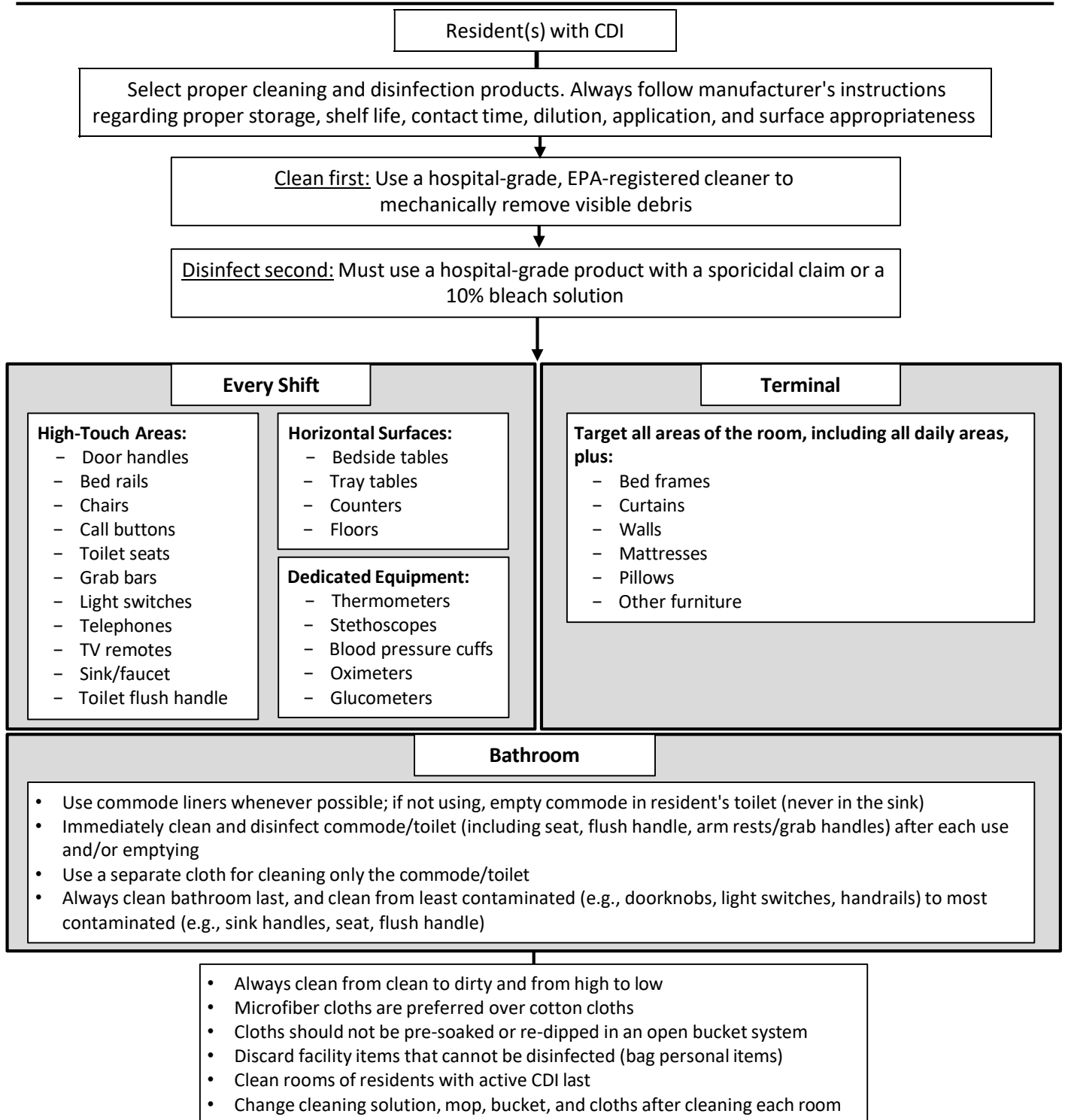
or has no CDI in previous 12 weeks (3rd choice)

Secondary considerations

- Not currently on proton pump inhibitors (PPIs)
- No GI/bowel condition comorbidities (diverticular disease, inflammatory bowel disease, Crohn's, peptic ulcer disease)
- No PEG/PEJ tube (no tube feeds)
- Not severely immunocompromised (cancer, chemotherapy, or solid organ transplant)
- Not bedbound/heavily dependent on healthcare workers for ADLs



A4. Environmental Cleaning and Disinfection



Action Items:

Train Environmental Service staff on importance of cleaning and disinfection and the transmission of disease

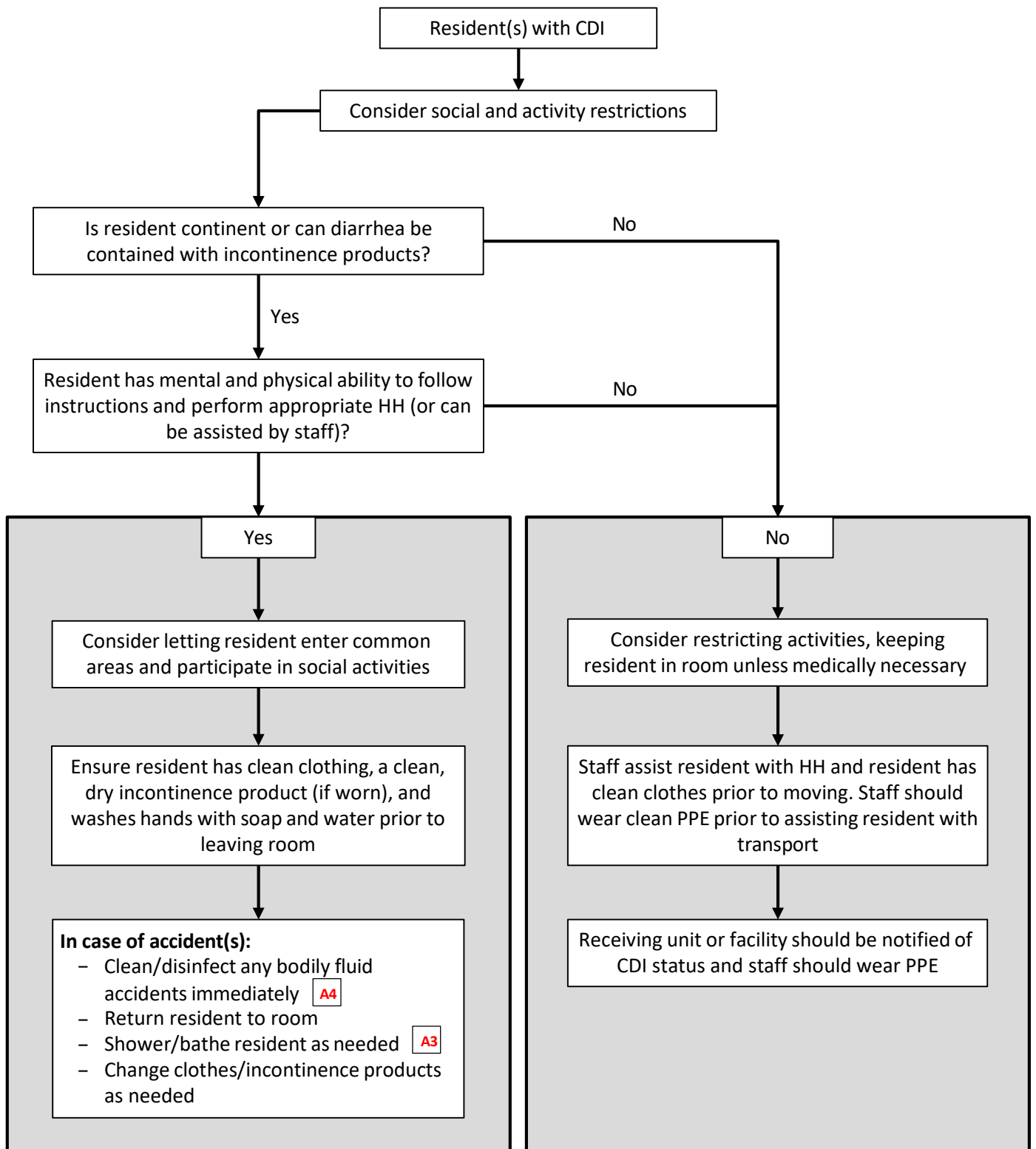
Establish responsibility for different elements of environmental cleaning and disinfection

Provide Environmental Service staff with high-touch cards for reference

Include cleaning symbol on door signs for residents with CDI to alert Environmental Services staff



A5. Social and Activity Precautions



Action Items:

Ensure a facility transfer form exists for transferring residents between facilities

