



Board of Health Meeting
 Tuesday, February 25, 2025
 13307 Miami Lane, Caldwell, ID 83607

Public comments specific to an agenda item for the February 25, 2025 Board of Health meeting can be submitted [here](#) or by mail to: SWDH Board of Health, Attn: Administration Office, 13307 Miami Lane, Caldwell, ID, 83607. The period to submit public comments will close at 10:00 a.m. on Monday, February 24, 2025. The meeting will be available through live streaming on [the SWDH You Tube channel](#).

Agenda

<u>A = Board Action Required</u>	<u>G =Guidance</u>	<u>I = Information item</u>	
10:00	A	Call Meeting to Order	Chairman Kelly Aberasturi
10:01		Pledge of Allegiance	
10:02		Welcome and Introduction of new Board of Health Member	Nikki Zogg
10:03		Roll Call	Chairman Kelly Aberasturi
10:04	A	Call for changes to agenda; vote to approve agenda	Chairman Kelly Aberasturi
10:05		In-person public comment	
10:10	A	Approval of December 2024 meeting minutes	Chairman Kelly Aberasturi
10:13	A	Approval of Second Amended Board of Health Annual Meeting Schedule	Nikki Zogg
10:15	I	November & December 2024 Monthly Expenditure and Revenue Report	Don Lee
10:30	G	Pre-Prosecution Diversion Lease Agreement	Nikki Zogg
10:40	A	Board of Health Leadership Position Elections	Chairman Kelly Aberasturi
11:10	I	Communications 2024 Year in Review	Monique Evancic
11:30		Break	
11:45	I	Childhood morbidity and mortality trends in District 3	Anna Briggs
12:05	I	Draft Food Establishment License Fees	Zach Brooks
12:15	I	Executive Council Update	Viki Purdy
12:25	I	Directors Report	
		<ul style="list-style-type: none"> • Lands site visit with Board of Health members • Sub Surface Sewage Disposal settlement with Risk Management • Millennium Fund and State Funding Updates • Legislative Updates 	
12:55	I	Future Agenda Items	
1:00		Adjourn	

NEXT MEETING: Tuesday, March 18, 2025 – 10:00 a.m.*



BOARD OF HEALTH MEETING MINUTES
Tuesday, December 17, 2024

BOARD MEMBERS:

Jennifer Riebe, Commissioner, Payette County – present
Lyndon Haines, Commissioner, Washington County – present
Zach Brooks, Commissioner, Canyon County – present
Kelly Aberasturi, Commissioner, Owyhee County – present
Viki Purdy, Commissioner, Adams County – not present
John Tribble, MD, Physician Representative – present
Bill Butticci, Commissioner, Gem County – present

STAFF MEMBERS:

In person: Nikki Zogg, Katrina Williams, Don Lee, Beth Kriete, Troy Cunningham

Virtual attendees: Jeff Renn

GUESTS: None

CALL THE MEETING TO ORDER

Chairman Kelly Aberasturi called the meeting to order at 12:05 p.m.

PLEDGE OF ALLEGIANCE

Meeting attendees participated in the pledge of allegiance.

ROLL CALL

Chairman Aberasturi – present; Dr. John Tribble – present; Commissioner Purdy – not present; Vice Chairman Haines – present; Commissioner Brooks – present; Commissioner Riebe – present; Commissioner Butticci – present.

REQUEST FOR ADDITIONAL AGENDA ITEMS AND APPROVAL OF AGENDA

Chairman Kelly Aberasturi asked for additional agenda items. Board members had no additional agenda items or changes to the agenda.

MOTION: Commissioner Haines made a motion to approve the agenda as presented. Commissioner Riebe seconded the motion. All in favor; motion passes.

IN-PERSON PUBLIC COMMENT

No public comment provided in person.

INTRODUCTION OF NEW EMPLOYEES

Division administrators introduced new employees.

APPROVAL OF MEETING MINUTES – NOVEMBER 19, 2024

Board members reviewed meeting minutes from the November 19, 2024 Board of Health meeting.

MOTION: Commissioner Riebe made a motion to approve the November 19, 2024 meeting minutes as corrected. Commissioner Haines seconded the motion. All in favor; motion passes.

2025 BOARD OF HEALTH MEETING CALENDAR REAPPROVAL

Board members reviewed the revised 2025 proposed Board of Health meeting calendar.

MOTION: Commissioner Riebe made a motion to approve the revised 2025 Board of Health meeting calendar. Commissioner Brooks seconded the motion. All in favor; motion passes.

OCTOBER 2024 MONTHLY EXPENDITURE AND REVENUE REPORT

Troy Cunningham, SWDH Financial Manager, provided an overview of the October 2024 Monthly Expenditure and Revenue Report. Troy is in the process of meeting with Idaho Department of Health and Welfare (IDHW) to ensure accurate data can be pulled from Luma. Accurate data will help ensure minimal audit findings. Troy clarified that the findings would not be specific to SWDH staff actions but rather related to the data being pulled from Luma. These findings will likely remain with SWDH for a few years until the Luma issues are resolved.

2025 BOARD OF HEALTH WORKPLAN

Board members reviewed the 2025 Board of Health workplan. Nikki has met with Board members individually and incorporated the input received. Topics for the 2025 workplan will focus on programs and services that support young children and families to help align with the Idaho Department of Health and Welfare’s (IDHW) goal to reduce the number of children in foster care. This alignment will help identify opportunities for data sharing and connections to amplify our work and make it more impactful.

POLICY AND POSITION STATEMENTS REVIEW AND APPROVAL

Board members reviewed the proposed Policy and Position Statements. These statements have been discussed and reviewed for several months in a row now.

MOTION: Commissioner Haines made a motion to approve the Policy and Position Statements as presented. Commissioner Riebe seconded the motion. All in favor; motion passes.

DIRECTOR’S REPORT

No items for the Director’s Report this month.

There being no further discussion, the meeting adjourned at 12:51 p.m.

Respectfully submitted:

Approved as written:

Nikole Zogg
Secretary to the Board

Kelly Aberasturi
Chairman

Date: January 21 , 2024



2025 PUBLIC MEETING NOTICE

Second Amended

February 25, 2025

Southwest District Health
Nikole Zogg, Director
13307 Miami Lane
Caldwell, ID 83607

The Southwest District Health Board of Health will hold their monthly Board Meetings on the following dates at 9:00 a.m., unless otherwise noted, at Southwest District Health, 13307 Miami Lane, Caldwell, Idaho.

Tuesday, January 21, 2025 (cancelled) **	Tuesday, July 22, 2025
Tuesday, February 25, 2025*	Tuesday, August 26, 2025
Tuesday, March 18, 2025*	Tuesday, September 23, 2025***
Tuesday, April 22, 2025	Tuesday, October 28, 2025
Tuesday, May 20, 2025	Tuesday, November 18, 2025
Tuesday, June 24, 2025	Tuesday, December 16, 2025*

This public notice satisfies the notice of meeting requirements in Idaho Code 74-204(1), Open Meeting Law. This document is posted in the principal office of Southwest District Health where the Board of Health meetings are held and is made available at <https://phd3.idaho.gov/boh/calendar/>.

If you have any questions, please contact Nikole Zogg at 208-455-5317.

* These meetings will be held from 10:00 a.m. to 1:00 p.m. to allow for winter driving conditions.

**The Board of Health meeting scheduled for Tuesday, January 21, 2025 has been cancelled.

***The September Board of Health meeting date has been amended to September 23, 2025 due to a scheduling conflict with Idaho Association of Counties Annual Conference.

Healthier Together

13307 Miami Lane ● Caldwell, ID 83607 ● (208) 455-5300 ● FAX (208) 454-7722



SOUTHWEST DISTRICT HEALTH

REVENUES & EXPENDITURE REPORT FOR FY2025

Nov 2024

Cash Basis

Target **41.7%**

Fund Balances		
	FY Beginning	Nov 2024 Ending
General Operating Fund	\$ 636,900	\$ 428,828
LGIP Operating	\$ 6,938,818	\$ 7,118,163
LGIP Vehicle Replacement	\$ 108,497	\$ 110,859
LGIP Capital	\$ 1,299,174	\$ 1,299,174
Total	\$ 8,983,390	\$ 8,957,024

Income Statement Information			
	YTD		Month
Net Revenue:	\$ 5,583,053	\$ 1,166,876	
Expenditures:	\$ (4,736,471)	\$ (851,153)	
Net Income:	\$ 846,582	\$ 315,724	

District Activity - Fund 29000

Revenue								
	Office of the Director	Clinic Services	Env & Community Health	District Operations	Total	YTD	Total Budget	Percent Budget to Actual
County Contributions	\$ 262,145	\$ -	\$ -	\$ -	\$ 262,145	\$ 1,295,784	\$ 3,122,831	41%
Fees	\$ -	\$ 43,188	\$ 92,661	\$ -	\$ 135,849	\$ 867,194	\$ 1,704,841	51%
Contract Revenue	\$ -	\$ 245,291	\$ 460,826	\$ 26,672	\$ 732,789	\$ 2,905,691	\$ 6,257,743	46%
Sale of Assets	\$ -	\$ -	\$ -	\$ -	\$ -	\$ -	\$ -	0%
Interest	\$ 36,094	\$ -	\$ -	\$ -	\$ 36,094	\$ 181,706	\$ 337,850	54%
Other	\$ -	\$ -	\$ -	\$ -	\$ -	\$ 332,677	\$ 1,656,666	20%
Monthly Revenue	\$ 298,239	\$ 288,478	\$ 553,487	\$ 26,672	\$ 1,166,876	\$ 5,583,053	\$ 13,079,931	43%
Year-to-Date Revenue	\$ 1,757,708	\$ 1,683,164	\$ 2,974,905	\$ 334,324	\$ 6,750,101	DIRECT BUDGET		

Expenditures								
	Office of the Director	Clinic Services	Env & Community Health	District Operations	Total	YTD	Total Budget <small>*Shift personnel savings down*</small>	Percent Budget to Actual
Personnel	\$ 26,115	\$ 298,697	\$ 233,633	\$ 114,090	\$ 672,535	\$ 3,568,581	\$ 9,324,880	38%
Operating	\$ (1,800)	\$ 86,823	\$ 53,344	\$ 39,651	\$ 178,018	\$ 1,157,150	\$ 2,403,122	48%
Capital Outlay	\$ -	\$ -	\$ -	\$ -	\$ -	\$ -	\$ 80,000	0%
Trustee & Benefits	\$ -	\$ -	\$ 600	\$ -	\$ 600	\$ 10,739	\$ 1,271,929	1%
Monthly Expenditures	\$ 24,315	\$ 385,520	\$ 287,577	\$ 153,740	\$ 851,153	\$ 4,736,471	\$ 13,079,931	36%
Year-to-Date Expenditures	\$ 212,468	\$ 2,518,010	\$ 1,768,336	\$ 1,060,283	\$ 5,559,097	DIRECT BUDGET		

SOUTHWEST DISTRICT HEALTH - ADULT CRISIS CENTER ACTIVITY

Nov 2024

REVENUES & EXPENDITURE REPORT FOR FY2024

Cash Basis

Target **41.7%**



Income Statement Information

	<u>YTD</u>	<u>Month</u>
Net Revenue: \$	862,546	\$ 125,000
Expenditures: \$	(577,625)	\$ (122,706)
Net Income: \$	284,921	\$ 2,294

Adult Crisis Activity - Fund 29001

Revenue				
	Crisis Center	YTD	Total Budget	Percent Budget to Actual
Contract Revenue	\$ 125,000	\$ 862,546	\$ 1,020,000	85%
Monthly Revenue	\$ 125,000	\$ 862,546	\$ 1,020,000	85%
DIRECT BUDGET				

Expenditures				
	Crisis Center	YTD	Total Budget	Percent Budget to Actual
Personnel	\$ 1,717	\$ 9,956	\$ 18,870	53%
Operating	\$ 120,990	\$ 567,668	\$ 77,495	733%
Capital Outlay	\$ -	\$ -	\$ -	0%
Trustee & Benefits	\$ -	\$ -	\$ 923,635	0%
Monthly Expenditures	\$ 122,706	\$ 577,625	\$ 1,020,000	57%
DIRECT BUDGET				

57% (Including T&B Budget)

SOUTHWEST DISTRICT HEALTH - YOUTH CRISIS CENTER ACTIVITY

Nov 2024

REVENUES & EXPENDITURE REPORT FOR FY2024

Cash Basis

Target **41.7%**



Income Statement Information

	<u>YTD</u>	<u>Month</u>
Restricted Funds:	\$ 1,336,691	\$ -
Net Revenues:	\$ 660,650	\$ 125,000
Expenditures:	\$ (1,199,323)	\$ (477,023)
Net Income:	\$ 798,018	\$ (352,023)

Youth Crisis Activity - Fund 29002

Revenue				
	Crisis Center	YTD	Total Budget	Percent Budget to Actual
Carry Over Restricted	\$ -	\$ 1,336,691	\$ 1,336,691	100%
Contract Revenue	\$ 125,000	\$ 660,650	\$ 355,750	186%
Monthly Revenue	\$ 125,000	\$ 1,997,341	\$ 1,692,441	118%
DIRECT BUDGET				

Expenditures				
	Crisis Center	YTD	Total Budget	Percent Budget to Actual
Personnel	\$ 10,300	\$ 66,356	\$ 221,775	30%
Operating	\$ 125,380	\$ 477,818	\$ 717,973	67%
Capital Outlay	\$ 287,532	\$ 503,504	-	0%
Trustee & Benefits	\$ 53,811	\$ 151,644	\$ 752,693	20%
Monthly Expenditures	\$ 477,023	\$ 1,199,323	\$ 1,692,441	71%
DIRECT BUDGET				

45% *(Including \$350,000 T&B Budget)*

38% *(Excluding \$350,000 T&B Budget)*



SOUTHWEST DISTRICT HEALTH

REVENUES & EXPENDITURE REPORT FOR FY2025

Dec 2024

Cash Basis

Target **50.0%**

Fund Balances		
	FY Beginning	Dec 2024 Ending
General Operating Fund	\$ 636,900	\$ 1,037,383
LGIP Operating	\$ 6,938,818	\$ 7,151,778
LGIP Vehicle Replacement	\$ 108,497	\$ 111,302
LGIP Capital	\$ 1,299,174	\$ 1,299,174
Total	\$ 8,983,390	\$ 9,599,636

Income Statement Information			
	YTD		Month
Net Revenue:	\$ 6,750,101	\$ 1,167,047	
Expenditures:	\$ (5,559,098)	\$ (822,627)	
Net Income:	\$ 1,191,003	\$ 344,421	

District Activity - Fund 29000

Revenue								
	Office of the Director	Clinic Services	Env & Community Health	District Operations	Total	YTD	Total Budget	Percent Budget to Actual
County Contributions	\$ 245,241	\$ -	\$ -	\$ -	\$ 245,241	\$ 1,541,025	\$ 3,122,831	49%
Fees	\$ -	\$ 90,188	\$ 238,779	\$ -	\$ 328,967	\$ 1,196,162	\$ 1,704,841	70%
Contract Revenue	\$ -	\$ 218,406	\$ 253,907	\$ 39,939	\$ 512,252	\$ 3,417,943	\$ 6,257,743	55%
Sale of Assets	\$ -	\$ -	\$ -	\$ -	\$ -	\$ -	\$ -	0%
Interest	\$ 34,058	\$ -	\$ -	\$ -	\$ 34,058	\$ 215,764	\$ 337,850	64%
Other	\$ -	\$ -	\$ 46,529	\$ -	\$ 46,529	\$ 379,206	\$ 1,656,666	23%
Monthly Revenue	\$ 279,299	\$ 308,594	\$ 539,215	\$ 39,939	\$ 1,167,047	\$ 6,750,101	\$ 13,079,931	52%
Year-to-Date Revenue	\$ 1,757,708	\$ 1,683,164	\$ 2,974,905	\$ 334,324	\$ 6,750,101	DIRECT BUDGET		

Expenditures								
	Office of the Director	Clinic Services	Env & Community Health	District Operations	Total	YTD	Total Budget <small>*Shift personnel savings down*</small>	Percent Budget to Actual
Personnel	\$ 29,377	\$ 300,967	\$ 239,241	\$ 110,677	\$ 680,263	\$ 4,248,844	\$ 9,324,880	46%
Operating	\$ 11,220	\$ 67,803	\$ 15,220	\$ 45,666	\$ 139,909	\$ 1,297,059	\$ 2,403,122	54%
Capital Outlay	\$ -	\$ -	\$ -	\$ 2,455	\$ 2,455	\$ 2,455	\$ 80,000	3%
Trustee & Benefits	\$ -	\$ -	\$ -	\$ -	\$ -	\$ 10,739	\$ 1,271,929	1%
Monthly Expenditures	\$ 40,597	\$ 368,770	\$ 254,462	\$ 158,798	\$ 822,627	\$ 5,559,098	\$ 13,079,931	43%
Year-to-Date Expenditures	\$ 212,468	\$ 2,518,010	\$ 1,768,336	\$ 1,060,283	\$ 5,559,097	DIRECT BUDGET		

SOUTHWEST DISTRICT HEALTH - ADULT CRISIS CENTER ACTIVITY

Dec 2024

REVENUES & EXPENDITURE REPORT FOR FY2024

Cash Basis

Target **50.0%**



Income Statement Information

	<u>YTD</u>	<u>Month</u>
Net Revenue: \$	902,546	\$ 40,000
Expenditures: \$	(584,589)	\$ (6,964)
Net Income: \$	317,957	\$ 33,036

Adult Crisis Activity - Fund 29001

Revenue				
	Crisis Center	YTD	Total Budget	Percent Budget to Actual
Contract Revenue	\$ 40,000	\$ 902,546	\$ 1,020,000	88%
Monthly Revenue	\$ 40,000	\$ 902,546	\$ 1,020,000	88%
DIRECT BUDGET				

Expenditures				
	Crisis Center	YTD	Total Budget	Percent Budget to Actual
Personnel	\$ 1,538	\$ 11,495	\$ 18,870	61%
Operating	\$ 5,426	\$ 573,094	\$ 77,495	740%
Capital Outlay	\$ -	\$ -	\$ -	0%
Trustee & Benefits	\$ -	\$ -	\$ 923,635	0%
Monthly Expenditures	\$ 6,964	\$ 584,589	\$ 1,020,000	57%
DIRECT BUDGET				

57% *(Including T&B Budget)*

SOUTHWEST DISTRICT HEALTH - YOUTH CRISIS CENTER ACTIVITY

Dec 2024

REVENUES & EXPENDITURE REPORT FOR FY2024

Cash Basis

Target **50.0%**



Income Statement Information

	<u>YTD</u>	<u>Month</u>
Restricted Funds:	\$ 1,336,691	\$ -
Net Revenues:	\$ 785,650	\$ 125,000
Expenditures:	\$ (1,404,468)	\$ (205,145)
Net Income:	\$ 717,873	\$ (80,145)

Youth Crisis Activity - Fund 29002

Revenue				
	Crisis Center	YTD	Total Budget	Percent Budget to Actual
Carry Over Restricted	\$ -	\$ 1,336,691	\$ 1,336,691	100%
Contract Revenue	\$ 125,000	\$ 785,650	\$ 355,750	221%
Monthly Revenue	\$ 125,000	\$ 2,122,341	\$ 1,692,441	125%
DIRECT BUDGET				

Expenditures				
	Crisis Center	YTD	Total Budget	Percent Budget to Actual
Personnel	\$ 10,249	\$ 76,605	\$ 221,775	35%
Operating	\$ 1,280	\$ 479,098	\$ 717,973	67%
Capital Outlay	\$ 154,750	\$ 658,254	-	0%
Trustee & Benefits	\$ 38,866	\$ 190,510	\$ 752,693	25%
Monthly Expenditures	\$ 205,145	\$ 1,404,468	\$ 1,692,441	83%
DIRECT BUDGET				

45% *(Including \$350,000 T&B Budget)*

47% *(Excluding \$350,000 T&B Budget)*

MEMORANDUM OF INTENT TO ENTER INTO A LEASE AGREEMENT

The following proposed terms are offered in an effort to negotiate an acceptable arrangement in which Southwest District Health (Interested party "IP") would lease the designated property known as 2805 Blaine St., Suite 200, Caldwell, ID 83605 for an initial period of Fourteen (14) months.

We recognize the transaction will require further documentation and approvals, including the preparation and approval of a formal agreement setting forth the terms and conditions of the proposed lease; nevertheless, we are executing this letter to evidence our intention to proceed in mutual good faith to complete work required to negotiate terms of a lease agreement consistent with this letter.

The proposed terms and conditions include, but are not limited to, the following:

1. **Location:** 2805 Blaine St., Suite 200, Caldwell, ID 83605
2. **Tenant:** Southwest District Health
3. **Use:** Counseling
4. **Estimated Floor Space:** +/- 2,636 Square Feet
5. **Lease Term:** Fourteen (14) Months, Modified Gross, 3% increase after month 12 of the lease.
6. **Option to Extend:** No formal options to extend offered at this time.
7. **Rent Schedule:**

<u>Months</u>	<u>Rate</u>	<u>Monthly Rent</u>	<u>Annual Rent</u>	<u>Additional Rent Est.</u>
1-12	\$ 15.25	\$ 3,349.92	\$ 40,199.00	~ \$TBD/Month
13-14	\$ 15.71	\$ 3,450.41	\$ 41,404.97	

8. **Tenant Improvements:** As-Is.
9. **Financials:** To be provided upon a fully executed Letter of Intent
10. **Security Deposit:** Equal to First Months Base Rent – \$2,855.67
11. **Total Due at Lease Signing:** Security deposit, plus first months' rent – \$TBD
12. **Lease Commencement/Possession Date:** Upon Fully Executed Lease Agreement

Initial's (____)(____)(____)

13. **Rent Commencement Date:** April 1, 2025
14. **Occupancy Permit:** By Tenant
15. **Signage:** By Tenant; at Tenants, sole cost and expense, to be pre-approved by the Landlord and meet all city sign code requirements
16. **Lease:** Landlord to provide the lease
17. **Representation:** Lee & Associates Idaho, LLC is representing the Tenant. Landlord to pay Lee & Associates Idaho, LLC Three Percent (3%) of the total gross lease.

Initial's (____)(____)(____)

It is understood that this Letter of Intent, when executed by each of the parties hereto, merely constitutes a statement of the parties' respective intentions with respect to the proposed lease, does not contain all matters upon which agreement must be reached in order for the proposed lease to be consummated and, therefore, does not in any manner constitute a binding commitment or agreement with respect to the proposed lease itself. A binding commitment or agreement with respect to the proposed lease will result only from the execution of the lease, subject to the terms and conditions expressed therein, and subject to the approval of the contemplated lease by landlord and tenant.

Each will pay its own expenses related to the negotiating and drafting of the Lease.

Thank you,
RJ Walker

TENANT:

BY: _____

ITS: _____

BY: _____

ITS: _____

DATE: _____

LANDLORD:

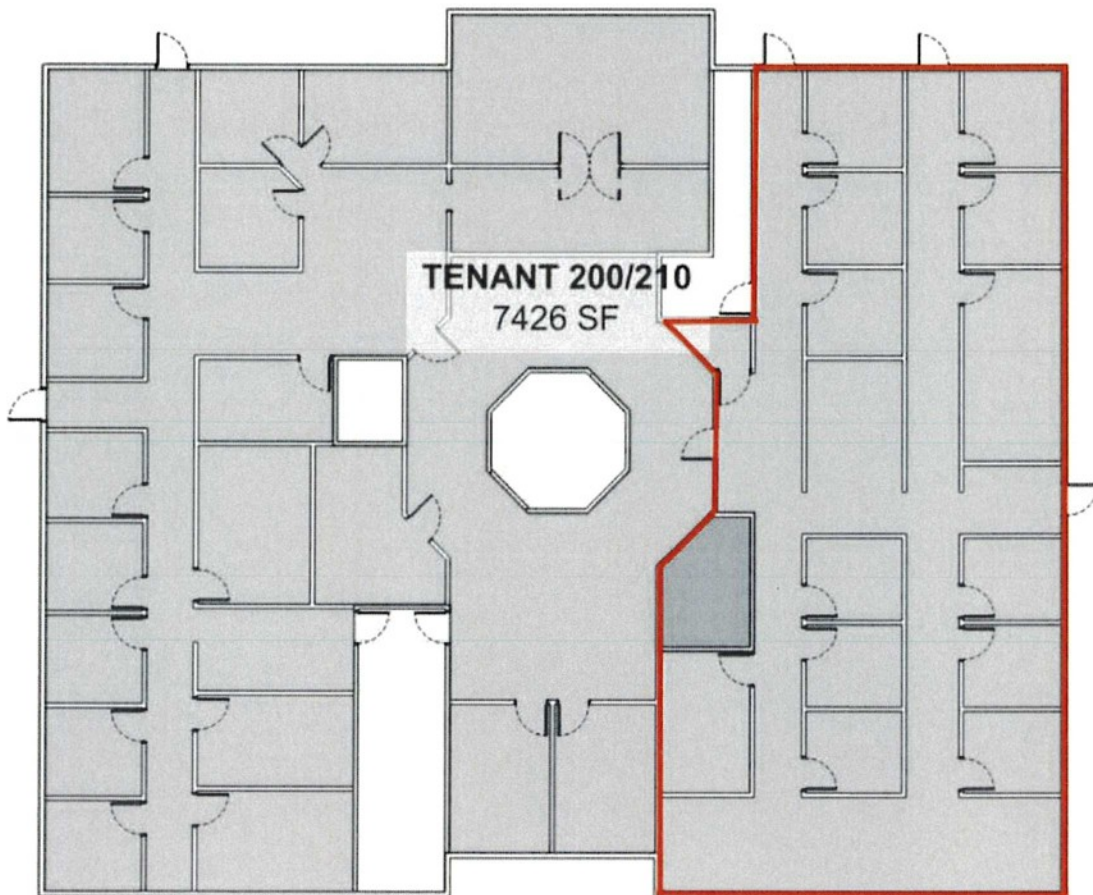
BY: _____

ITS: _____

DATE: _____

Initial's (____)(____)(____)

EXHIBIT A



Initial's (____)(____)(____)



Communications Year in Review 2024

Monique Evancic

Communications Manager & Public Information Officer

Media Mentions

- 90+ media mentions
- Combination of local, regional, and national news outlets
- International coverage:
 - AFP.com Agence France-Presse. The world's oldest news agency with an editorial presence in 150 countries.
- Compared to 54 mentions from May* - Dec 2023
 - *May is when I onboarded and started tracking

Local & Regional Media Outlets



National & International Media Outlets

The Washington Post

THE LATIN TIMES

AP Associated Press

AFP

The New York Times

Newsweek



Top Headlines

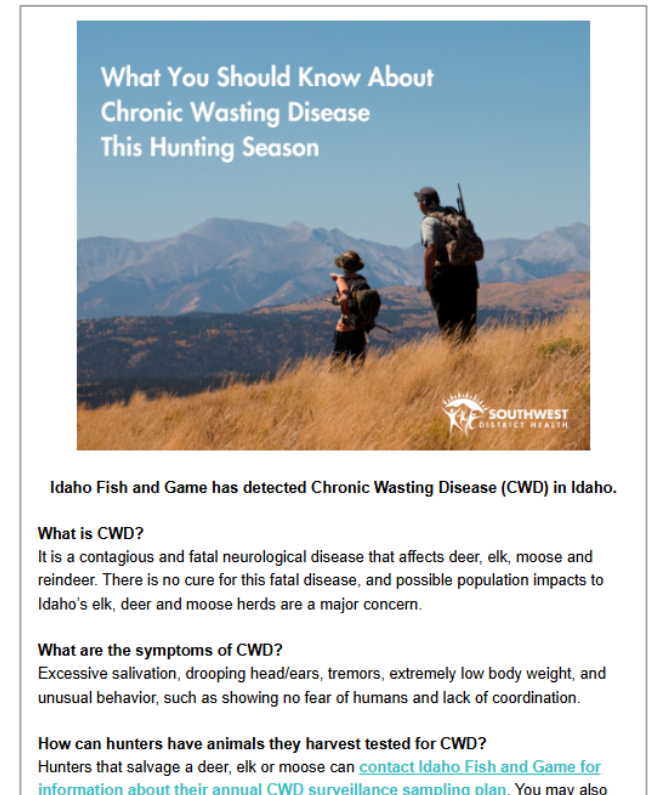
- 'There is an ongoing need': Youth crisis center in Nampa to open Monday
- Idaho health care leaders discuss key issues: housing, behavioral health, access to care
- Bill aimed at restraining Idaho health districts goes to House for amendments
- First reported flu-related death of the season in southwest Idaho, 12th statewide
- Southwest District Health and Marsing School partner for youth mental health initiative
- Caldwell high schoolers studying to become health care workers
- Idaho reports dramatic increase in whooping cough cases

Top Headlines

- Syphilis numbers still high in Idaho as states grapple with less funding for prevention
- Southwest District Health hosts 2nd annual fentanyl awareness town hall
- SWDH opens cooling center in Caldwell as heat wave enters Treasure Valley
- Two West Nile infections reported in Ada and Canyon Counties
- Health advisory issued for Lake Lowell due to cyanobacteria
- Groundbreaking held for free fitness court coming to Owyhee County
- Health department in Idaho reportedly becomes first in the nation to ban covid vaccine

E-Newsletter

- Launched in April
- Increased subscribers from about 200 to 11,000+ SWDH customers
- 42% average open rate
- Some topic examples:
 - Mental health
 - Emergency preparedness
 - Harmful algae blooms
 - Senior produce program
 - Diabetes prevention
 - 988



PIO

- I also serve on:
 - The SWDH Public Health Emergency Preparedness team (PHEP)
 - Treasure Valley Communicators workgroup
 - Statewide public health districts & Idaho Dept of Health & Welfare PIO group
 - Idaho Office of Emergency Management's Public Information & Emergency Response (PIER) team

PHEP Capability Gap Assessment Conference



You're invited to this important event focused on evaluating and enhancing our Public Health Emergency Preparedness (PHEP) capabilities. This conference is designed to accommodate all levels of understanding, ensuring a comprehensive and inclusive discussion.

Conference Highlights:

- **Overview of PHEP Capabilities:** Understand the fundamentals and current state of our preparedness
- **Gap Identification:** Explore areas where improvements are needed
- **Interactive Sessions:** Engage in discussions and activities tailored to various levels of expertise
- **Action Planning:** Contribute to developing strategies for addressing identified gaps



**RSVP HERE
BY OCT 31**



📍 Southwest District Health
13307 Miami Lane
Caldwell, ID 83607

📅 November 15
9a - 3:30p
Lunch provided

*This conference is made possible by CDC-RFA-TL24-0837 from the Centers for Disease Control and Prevention (CDC). Its contents are solely the responsibility of the authors and do not necessarily represent the official views of the Department or the Centers for Disease Control and Prevention (CDC). [SWDH] [Aug 29, 2024]





Childhood Mortality and Morbidity

Dr. Anna Briggs
Principal Research Analyst

Childhood Mortality (Death) and Morbidity (Illness)

- IDHW - focus on foster care
- SWDH - focus on a comprehensive view of health characteristics of children in our district.

- Notes:

 External Data → Same time frames not possible (~5 year)

 Many topics covered

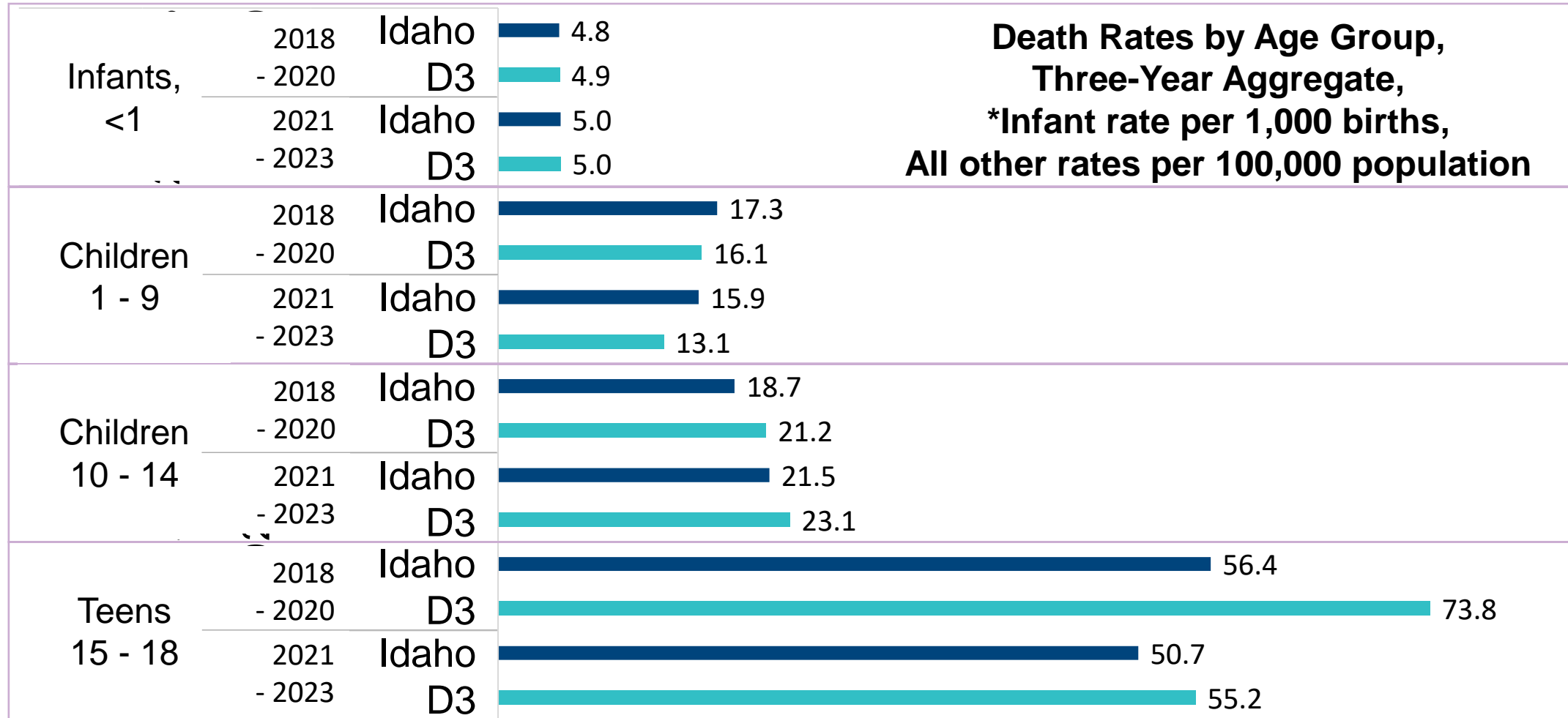
Topics Overview

- Mortality or Death
- Violent Crimes
- Childhood Cancers
- Infectious Diseases
- Substance Use, Bullying, Risk Behaviors
- Foster Care Data



Childhood Mortality (Death) Rates and Leading Causes

Childhood Mortality Rates



Childhood Leading Causes of Death, SWDH, 2021 - 2023



Infant, <1

Congenital Malformations, 9

Short Gestation and Low Birth Weight, 7

Accidents (unintentional injury), 7

Sudden Infant Death Syndrome, 7

Maternal Complication of pregnancy, <5

Complication of placenta, cord, and membranes, <5

Total Deaths, 62



Children, 1-9

Accidents (unintentional injury), 6

Congenital Malformations, <5

Influenza and Pneumonia, <5

Diseases of the Heart, <5

Malignant Neoplasms, <5

Total Deaths, 16



Children, 10-14

Intentional self harm (suicide), 8

Accidents (unintentional injury), <5

Malignant Neoplasms, <5

Congenital Malformations, <5

Total Deaths, 17



Teens, 15-18

Accidents (unintentional injury), 14

Intentional self harm (suicide), 10

Assault (homicide), <5

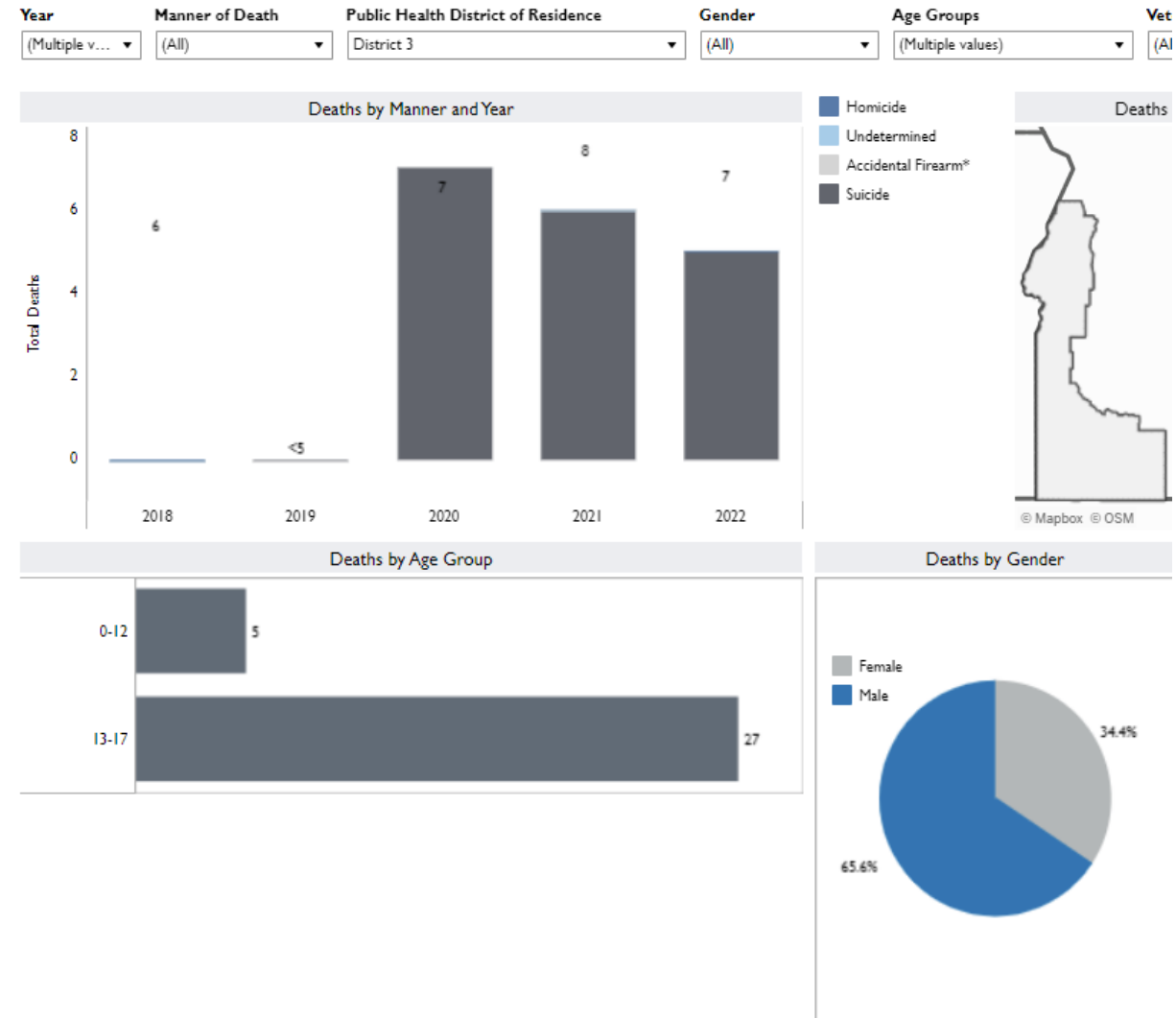
Diseases of the Heart, <5

Congenital Malformations, <5

Total Deaths, 33

Violent Crimes Data

Manner of Death	Age Group	Gender	Years (2018-2022)
Accidental Firearm	0-12 years	M	2021
Homicide	13-17 years	F, M	2018, 2022
Suicide	0-12 years	F, M	2018, 2022
Suicide	13-17 years	F, M	2018, 2019, 2020, 2021, 2022
Undetermined	0-12 years	M	2021
Undetermined	13-17 years	M	2018



Childhood Mortality (Death) Summary

- Rates increase with age groups
- D3 rates appear to follow same trends as Idaho
 - Teens in 2021-2023 higher rate
- Accidents (unintentional injury) – a leading cause of death in children of all age groups
- Intentional self harm (suicide) – a leading cause of death in children ages 10-18 years
 - Suicide - a cause of death in children of all age groups

Childhood Cancers

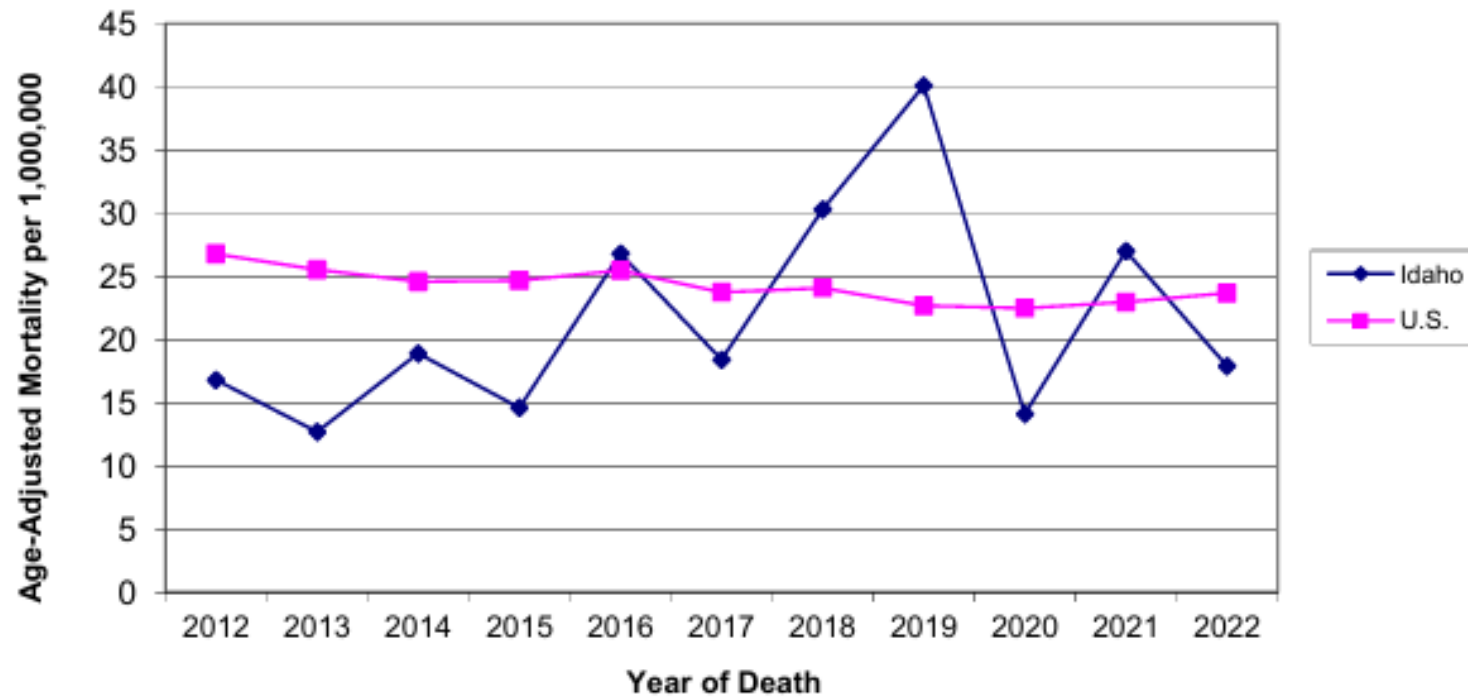
Idaho Childhood Cancers, Under 20 years, 2012-2021

- 981 diagnosed cases
 - 858 malignant cancers
- 118 children died from some form of cancer
 - Leading types of cancer mortality were brain and other central nervous system and leukemia
- In further analysis, there were no trends detected over time in D3, likely due to low number of cases and high variability.

Johnson et al., 2024

Childhood cancer mortality (ages 0-19 years)

Figure 3. Trends in Pediatric Cancer Mortality Rates



“The annual rates plotted for Idaho demonstrate large year-to-year variability that is expected due to the relatively small numbers of deaths per year; although there were large increases in pediatric cancer mortality in Idaho during 2018–2019, the overall trend for the period from 2012–2022 did not show a statistically significant increase.”

“Idaho ranked 43rd among states and the District of Columbia in pediatric (ages 0–19) cancer mortality”

Johnson et al., 2024

Childhood Cancers Summary

- Idaho ranked 43rd for childhood cancer deaths with low rates
- No statistical change in Idaho childhood cancer deaths from 2012 -2022
- No detectable cancer trends for District 3

Childhood Infectious Diseases

Infectious Diseases In Children (ages 0-18 yrs)

Sexually Transmitted Infection
 GI Diseases of Interest
 Respiratory Diseases of Interest

	Total cases 2019-2025*
AIDS	<5
Aseptic meningitis	<5
Botulism, infant	<5
Campylobacteriosis	175
Chlamydia trachomatis infection	1483
Cryptosporidiosis	13
Elevated Blood Lead	32
Extraordinary occurrence of illness	15
Giardiasis	37
Gonorrhea	119
Group A Streptococcus, invasive	14
Haemophilus influenzae, invasive	<5
Hemolytic uremic syndrome, post-diarrheal	5
Hepatitis A, acute	<5

	Total cases 2019-2025*
Hepatitis B virus infection, Chronic	<5
Hepatitis C, Acute	<5
Hepatitis C, chronic	7
HIV	<5
Malaria	<5
Measles (Rubeola)	8
Mumps	<5
Neisseria meningitidis, invasive (Mening. disease)	<5
Noroviruses	33
Pertussis	326
Pneumocystis pneumonia (PCP)	<5
Rabies PEP	24
Respiratory syncytial virus (RSV)	2294
S. aureus, coag+, meth- or oxi- resistant (MRSA)	7

	Total cases 2019-2025*
Salmonella Paratyphi (A, B, and C)	<5
Salmonella Typhi (S. Typhi)	<5
Salmonellosis (excl S. Typhi and S. Paratyphi)	57
Shiga toxin-producing Escherichia coli (STEC)	86
Shigellosis	7
Streptococcus pneumoniae, invasive disease (IPD)	9
Syphilis, early non-primary, non-secondary	<5
Syphilis, primary	<5
Syphilis, unknown duration or late	<5
Tuberculosis	<5
West Nile virus neuroinvasive disease	<5
West Nile virus non-neuroinvasive disease	<5
Yersiniosis (non-pestis)	<5

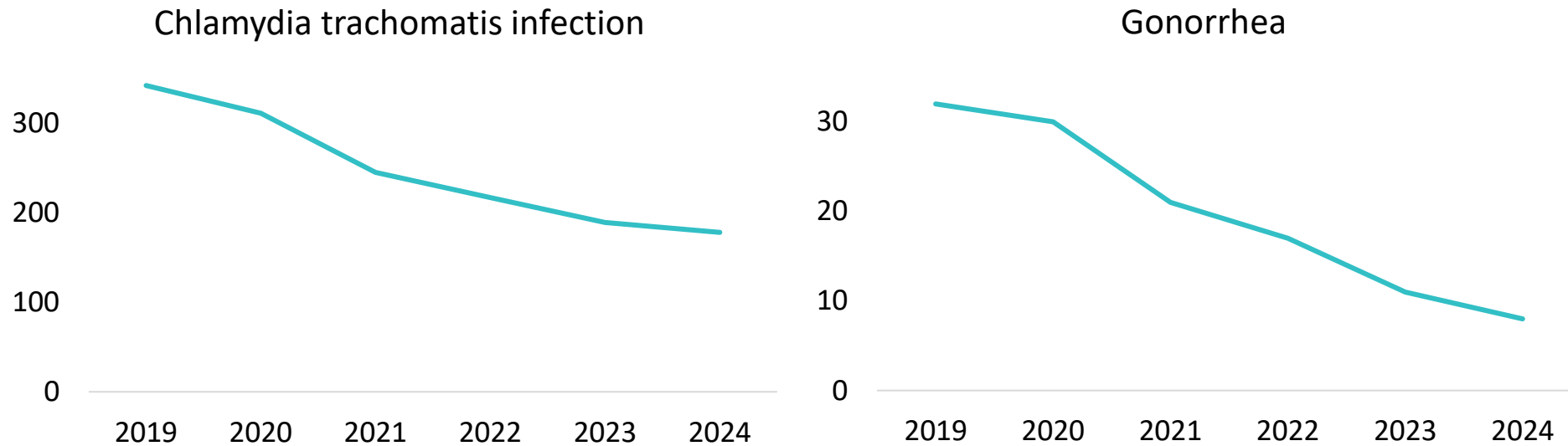
Infectious Diseases In Children (ages 0-18 yrs)

Respiratory Diseases of Interest
GI Diseases of Interest

Respiratory Diseases of Interest	2019	2020	2021	2022	2023	2024	2025*	Total
Pertussis	60	64		<5		198	<5	322
Respiratory syncytial virus (RSV)	223	120	448	694	240	561	8	2294
Total	283	184	448	694	240	759	8	2616

GI Disease of Interest	2019	2020	2021	2022	2023	2024	2025*	Total
Campylobacteriosis	27	24	37	31	26	30		175
Giardiasis	<5	<5	19	<5	<5	<5		19
Noroviruses	<5	<5	15	<5	5	7		27
Salmonellosis (excl S. Typhi and S. Paratyphi)	8	15	7	8	13	6		57
Shiga toxin-producing Escherichia coli (STEC)	11	8	21	22	10	14		86
Total	46	47	99	61	54	57		364

Infectious Diseases In Children (ages 0-18 yrs)



Sexually Transmitted Infections of Interest	2019	2020	2021	2022	2023	2024	2025*	Total
AIDS	<5							<5
Chlamydia trachomatis infection	342	311	245	217	189	178	<5	1482
Gonorrhea	32	30	21	17	11	8		119
Hepatitis B virus infection, Chronic	<5	<5		<5				<5
HIV		<5	<5	<5	<5			<5
Syphilis, early non-primary, non-secondary				<5				<5
Syphilis, primary		<5	<5					<5
Syphilis, unknown duration or late				<5				<5
Total	374	341	266	234	200	186	<5	1601

Childhood Infectious Diseases Summary

- Pertussis outbreak in 2024 to 2025 winter
- Nationwide norovirus outbreak this winter
- Detection of gonorrhea and chlamydia appears to be decreasing

Substance Use, Bullying, and Risk Behaviors

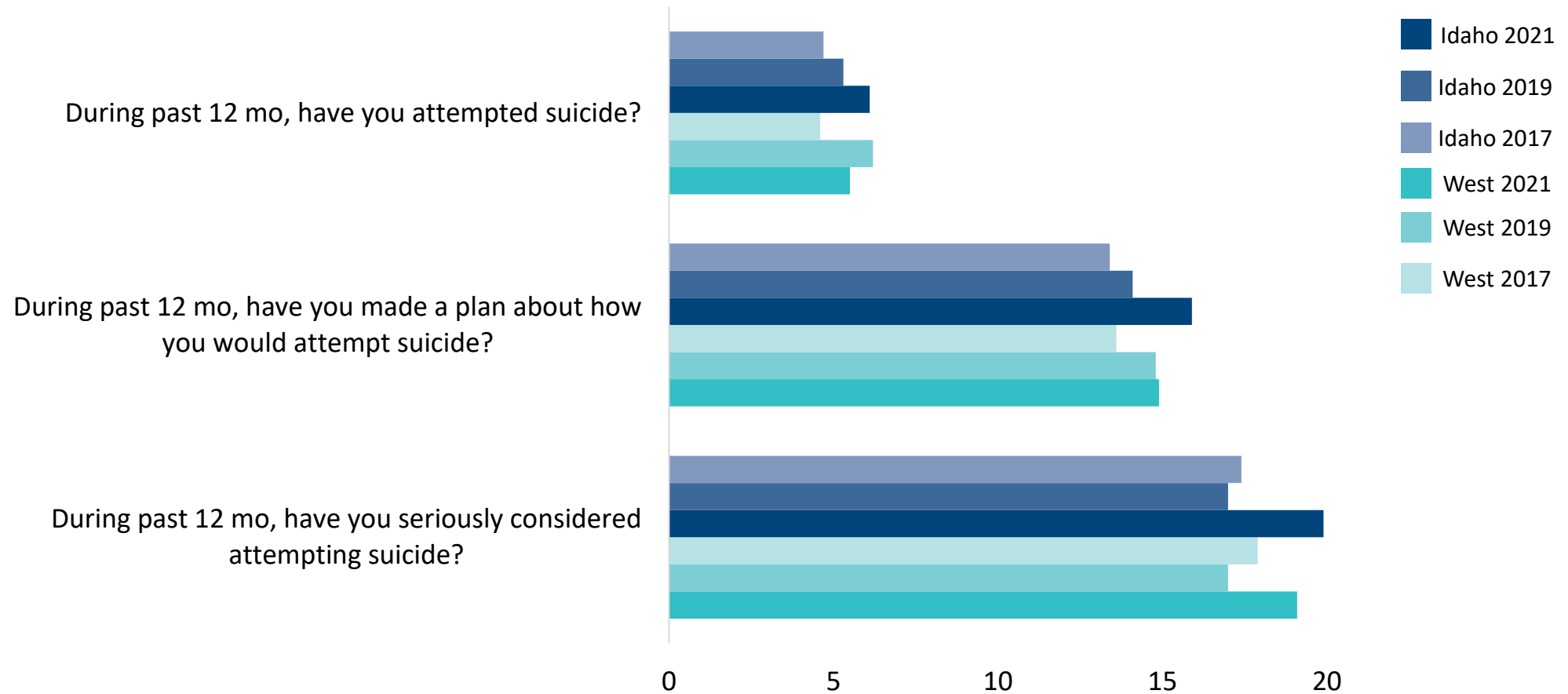
Idaho Healthy Youth Survey State Report 2021

- 54 schools
- 24 school districts and charter schools
- 6th, 8th, 10th, and 12th grade students
- 9,381 valid surveys
- Region 3 (West) includes the following counties: Adams, Canyon, Gem, Payette, Owyhee, Washington, Boise, Elmore, Ada, and Valley

In 2021, youth in western Idaho reported that:

- 34% have had at least 1 drink of alcohol
- 13% used marijuana
- 10% misused prescription drugs
- 18% used a vape pen or e-cigarette
- 0.6% used methamphetamines

Suicide Ideation, Attempts, and Depressive Symptoms (%) (answer is all or most of the time, or one or more times)



Bullying in 2021

- 20.6% of youth in the West (Public Health Districts 3 and 4) have been bullied
- 24.6% of youth in Idaho have been bullied







Idaho Youth Risk Behavior Survey – Idaho State Department of Education, 2021 Results

- 990 Students, 9-12th grade
- 23 public and charter schools

Substance Use

- 19% were offered, sold or given illegal drugs on school property during the past 12 months
- 38.5% have used an e-cigarette or electronic vapor product
- 23.3% drank alcohol in the last 30 days
- 14.4% used marijuana in the past 30 days
- 13.9% have ever taken prescription drugs without a physician's prescription

Healthy Behaviors – Weight Management

-  • 43.2% were trying to lose weight
- 24.1% are overweight or obese
-  • 10.3% drank a soda once or more per day in the last week
-  • 17.8% ate/drank recommended fruit servings during the past week
-  • 9.4% ate recommended vegetable servings during the past week
-  • 67.5% spent 3 or more hours per day on screen time
-  • 49.1% were physically active at least 60 minutes per day for 5 of 7 days

Healthy Behaviors – Sexual Activity

- 30.7% have had sexual intercourse
- 20.7% are currently sexually active
- 17.7% used drugs or alcohol before the last time they had sex

Substance Use, Bullying, and Risk Behaviors Summary

- Still impacting the health of children in Idaho and Southwest Idaho:
 - Substance use
 - Mental health
 - Bullying
 - Sexual activity
 - Nutrition
 - Exercise
- These surveys provide valuable insight on factors impacting the health of youth and children
 - Attempts for continued data collection lack support

Foster Care

Foster Care – Top Reasons for Removal in District 3

- Neglect (includes educational and medical neglect)
- Caretaker Substance Use
- Physical Abuse
- Incarceration of Caretaker
- Unstable Home Environment

Were there data you expected to cover or that were missing?

References

Bach Harrison LLC, Sponsored by Idaho Governor's Office of Drug Policy. (2022). *Idaho Healthy Youth Survey 2021 State Report*.

Idaho Department of Health and Welfare; Harder, P. (2024). *Idaho resident deaths age 0-18 by cause and district 2018 2023*.

Idaho Department of Health and Welfare; Thomas, P. (2025). Region 3 Initial Removal Reasons SFY 2025.

Idaho Department of Health and Welfare, Get Healthy Idaho. (2025, January 9). *Violent Deaths by County & Districts of Residence, 2014 - 2022*. <https://www.gethealthy.dhw.idaho.gov/Idaho-Vdrs>.

Idaho State Department of Education. (2022). *Results of the 2021 Idaho Youth Risk Behavior Survey*.

Johnson CJ, Morawski BM, Rycroft RK. Pediatric Cancer in Idaho, 2012–2021. Boise, ID: Cancer Data Registry of Idaho; May 2024.

National Electronic Disease Surveillance System Base System. (2025). *All Diseases 2019 - 2024 Under 18*.